



**Dr Carlos Eduardo
Barra Couri**

**Efeitos cardiovasculares
da efpeglenatida,
o novo arGLP-1:
estudo AMPLITUDE-O**

Design Features

- ✓ **International RCT randomizing eligible patients 1:1:1 to 4 mg efpeglenatide or 6 mg efpeglenatide or placebo**
- ✓ **GLP-1 semelhantes à exenatide tiveram resultados frustrantes anteriormente**
- ✓ **Visits at baseline & week 12, 24 then every 24 weeks**
- ✓ **No use of any GLP1 RA or DPP4 inhibitor**

Baseline Characteristics: N = 4076

Age (years)	64.5 (8.2)*	Prior Heart Failure	18%
Females	33%	Hypertension	91%
White	87%	Prior Retinopathy	33%
Tobacco Use	16%	Albuminuria	49%
Diabetes Duration (years)	15.4 (8.8)	BMI (kg/m²)	32.7 (6.2)
Prior CV Disease	90%	BP (mm Hg)	135/77
eGFR < 60 ml/min/1.73m²	32%		
Prior CVD & eGFR < 60	22%		

Baseline Drug Use

Glucose Lowering Drugs

None	2%
Any Insulin	63%
Metformin	73%
Sulfonylureas	25%
SGLT2 inhibitor	15%

Cardiovascular Drugs

ACE-I/ARB/ARNI	80%
Beta Blockers	66%
Statins	81%
Fibrates	9%
ASA	68%
Other Antiplatelet Drugs	26%

Baseline Lab Tests

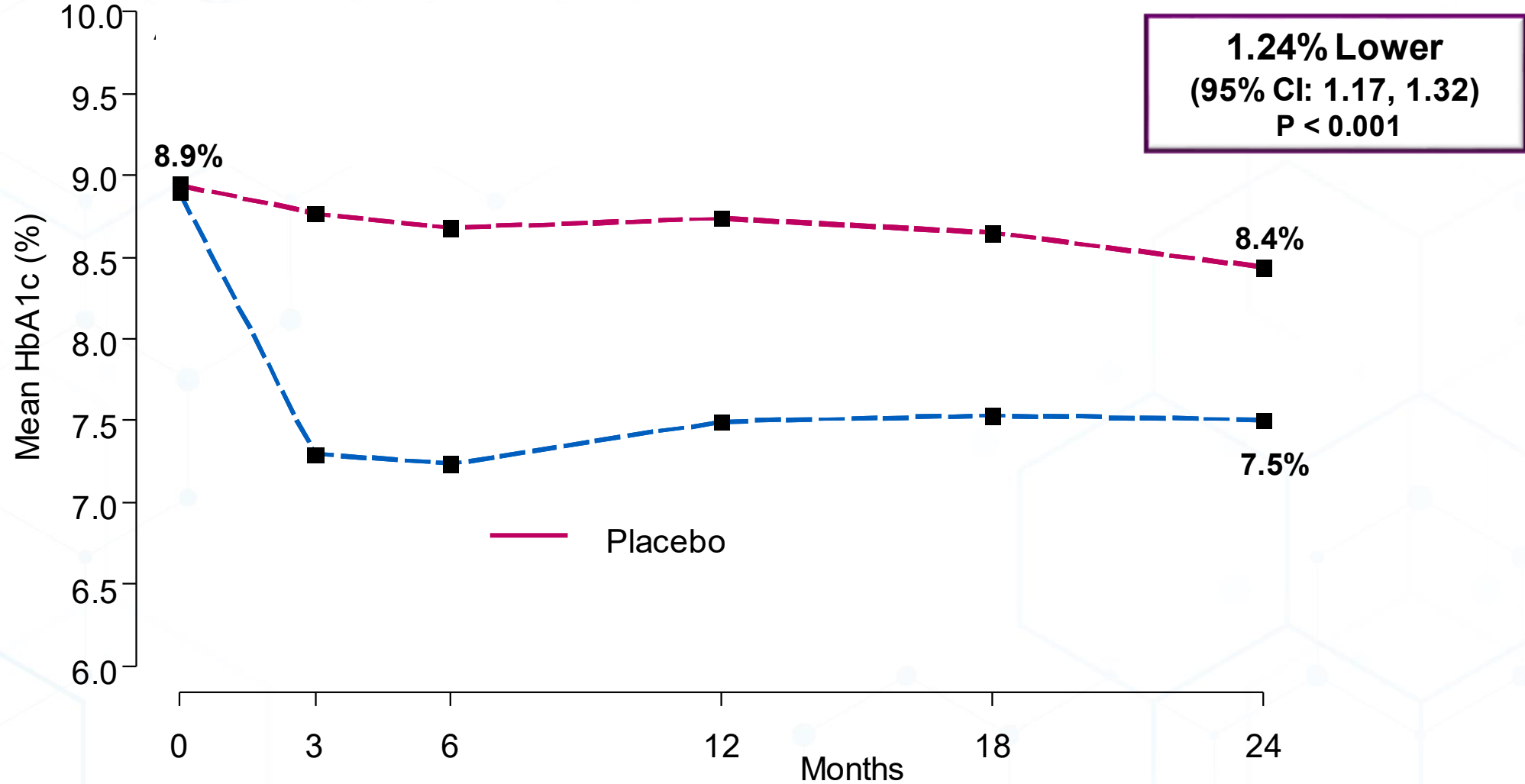
HbA1c	8.9 (1.5)%
Total Cholesterol	162 (47) mg/dl
LDL Cholesterol	81 (39) mg/dl
HDL Cholesterol	42 (12) mg/dl
Triglyceride	174 (125, 250) mg/dl
eGFR	72 (22) ml/min/1.73m²
Urine ACR	28.2 (9.7, 114.2) mg/g

Median Follow-up (IQR): 1.81 years (1.89, 1.98)

Person-years of Follow-up = 7395.4

Effect of Efpeglenatide on Clinical Measures

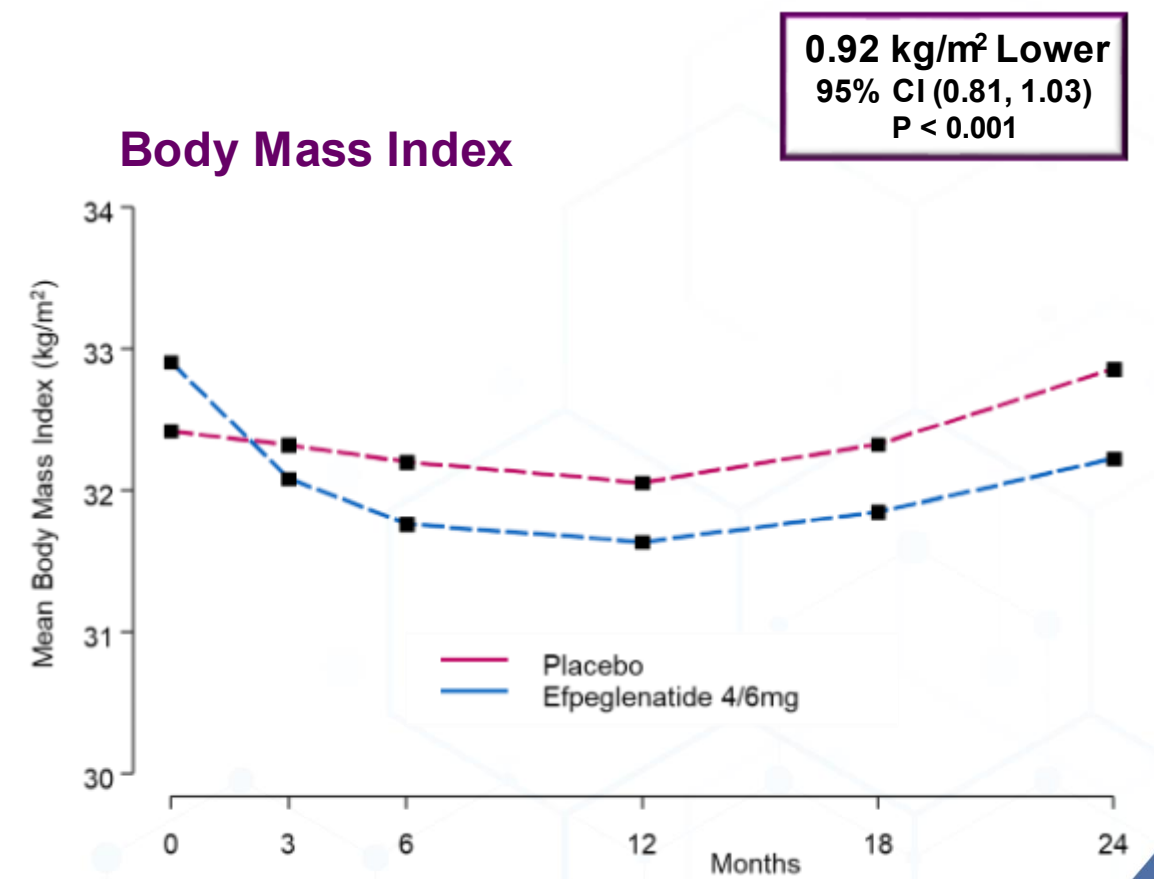
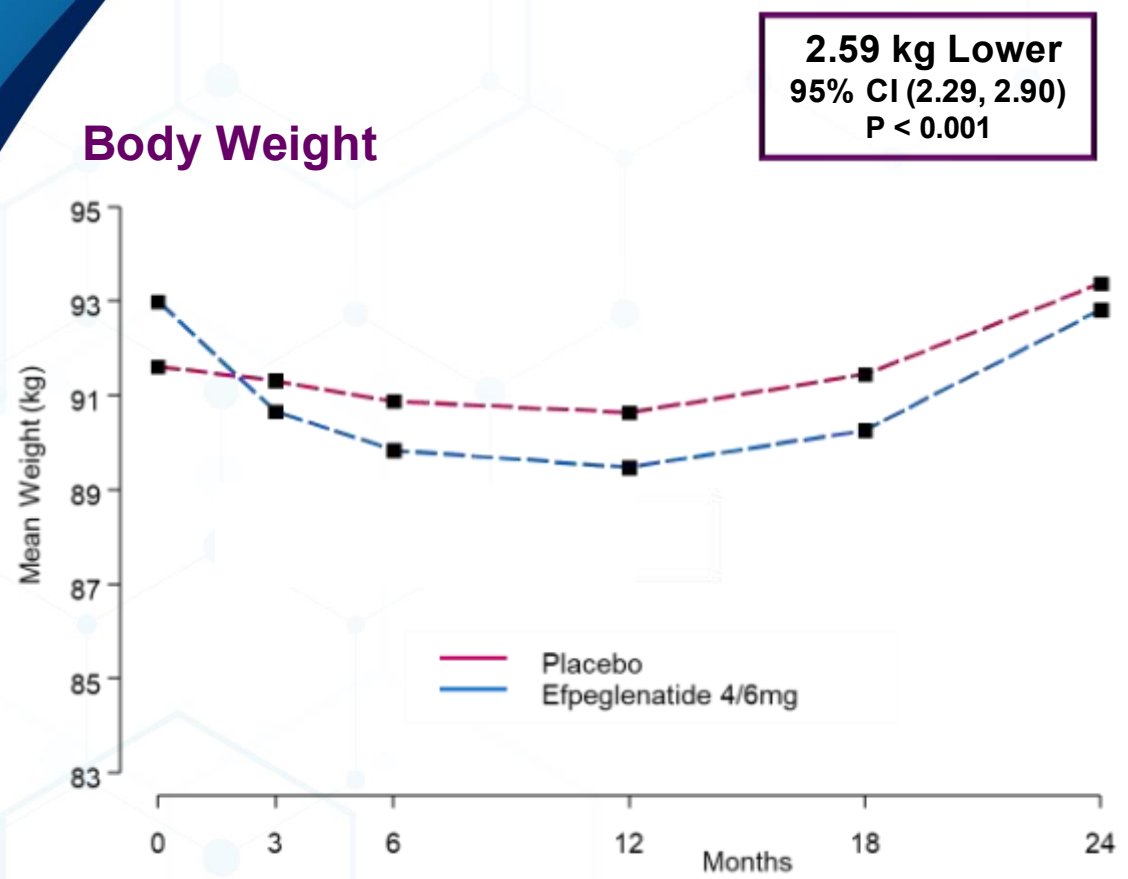
HbA1c Changes Over Time



Greater HbA1c Reduction with Efpeglenatide Despite More Additional Glucose Lowering Agents in Placebo Group

Effect of Efpeglenatide on Clinical Measures

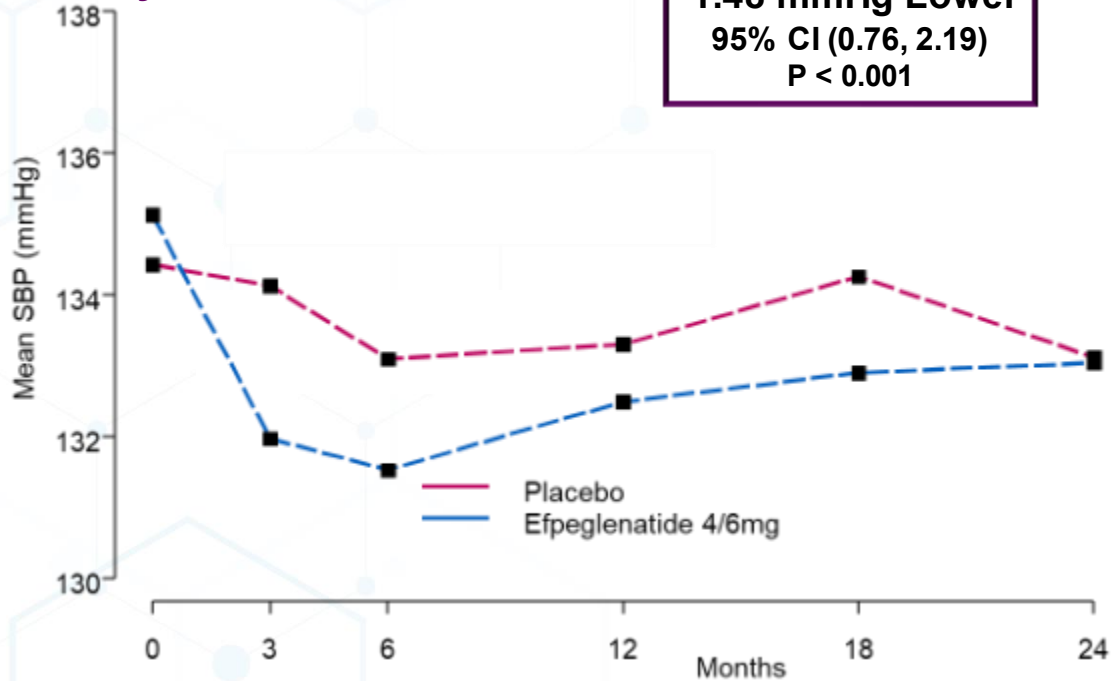
Body Weight and BMI Changes Over Time



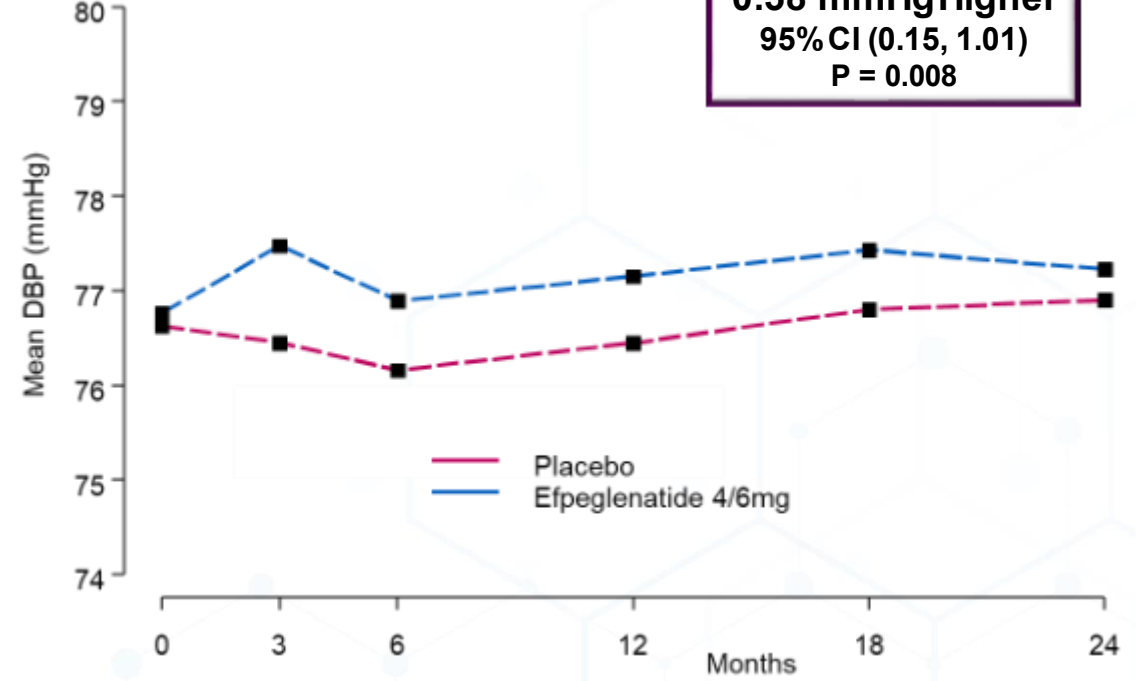
Effect of Efpeglenatide on Clinical Measures

Blood Pressure Changes Over Time

Systolic BP



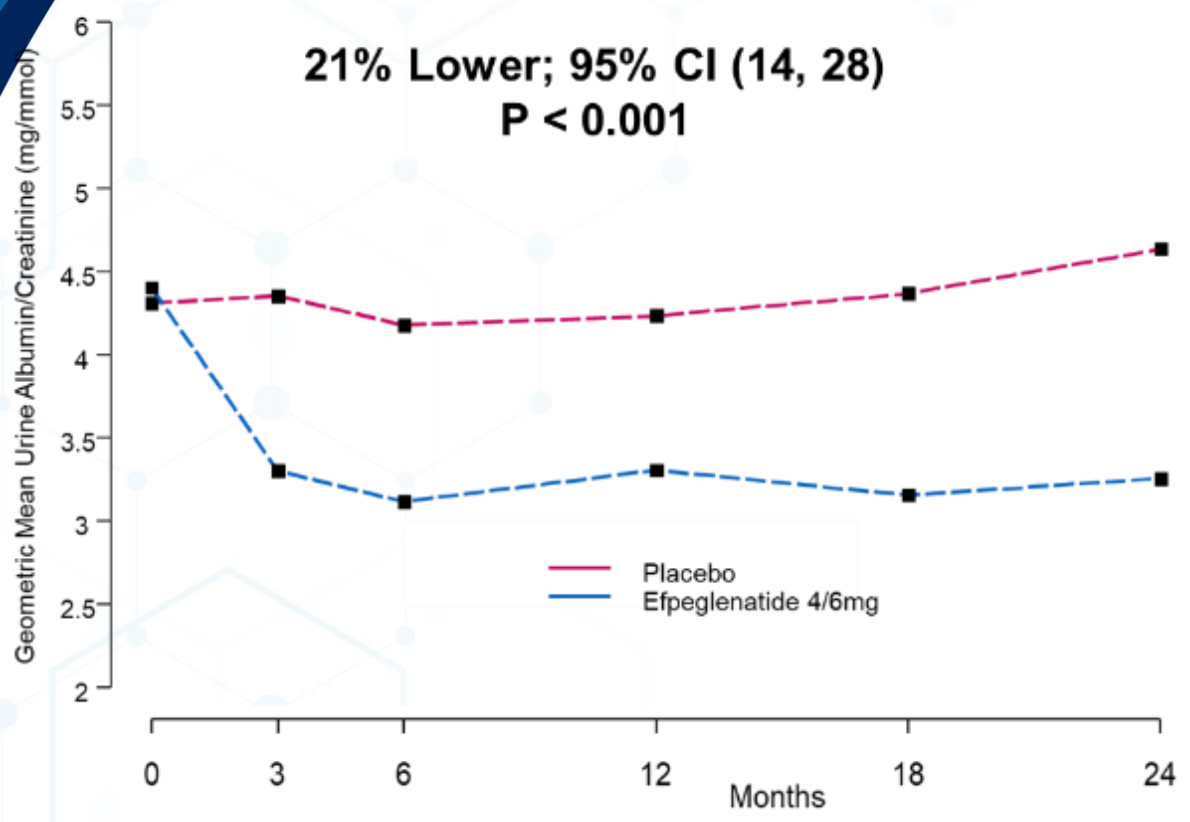
Diastolic BP



Effect of Efpeglenatide on UACR & eGFR Levels

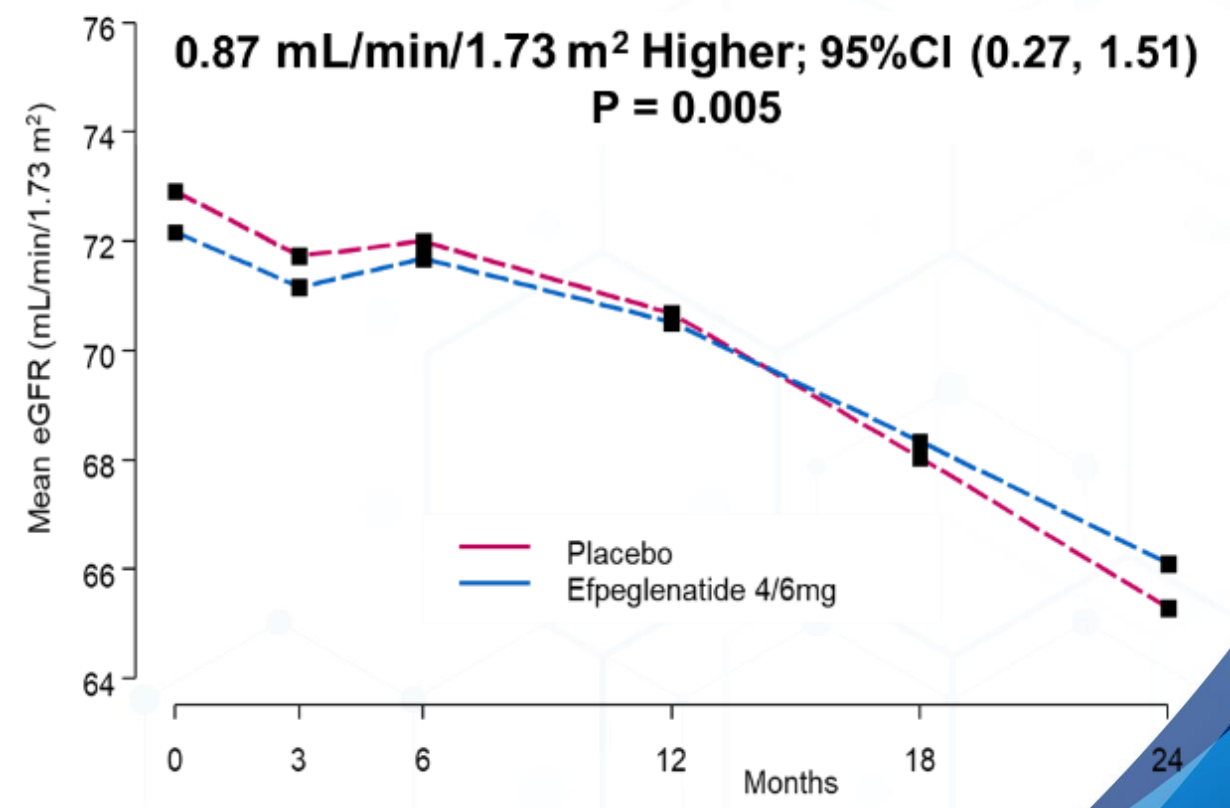
Urine Albumin:Creatinine (mg/mmol)

21% Lower; 95% CI (14, 28)
P < 0.001

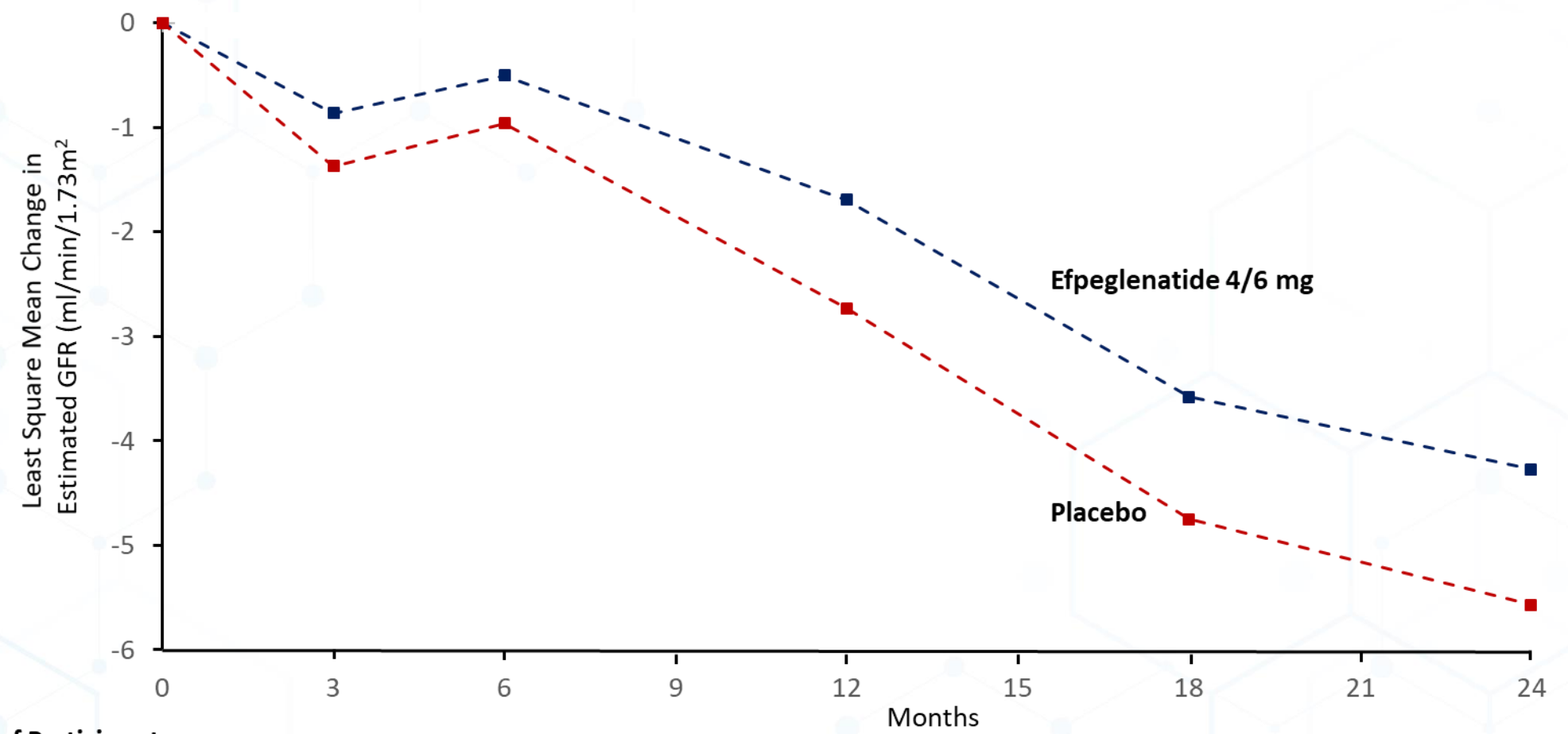


eGFR

0.87 mL/min/1.73 m² Higher; 95%CI (0.27, 1.51)
P = 0.005



Effect of Efpeglenatide on Change in eGFR



No. of Participants

Efpeglenatide	2717	2566	2520	2453	2024	490
Placebo	1357	1274	1250	1194	953	225

Primary & Secondary Outcomes

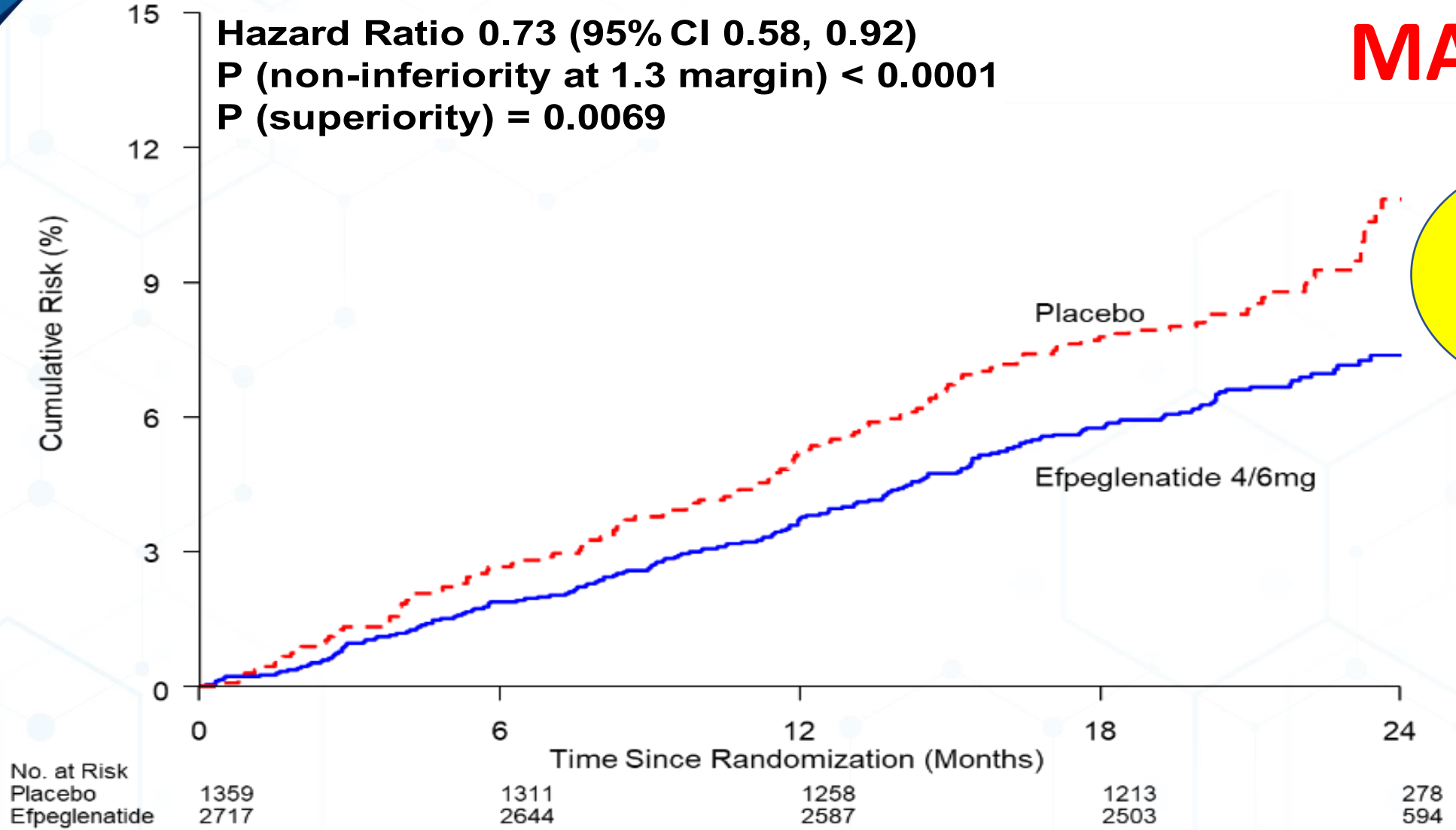
AMPLITUDE₀
Efepeglenatide Cardiovascular Outcomes

Efpeglenatide 4 or 6 mg

Hazard Ratio 0.73 (95% CI 0.58, 0.92)
P (non-inferiority at 1.3 margin) < 0.0001
P (superiority) = 0.0069

MACE

↓ 27%

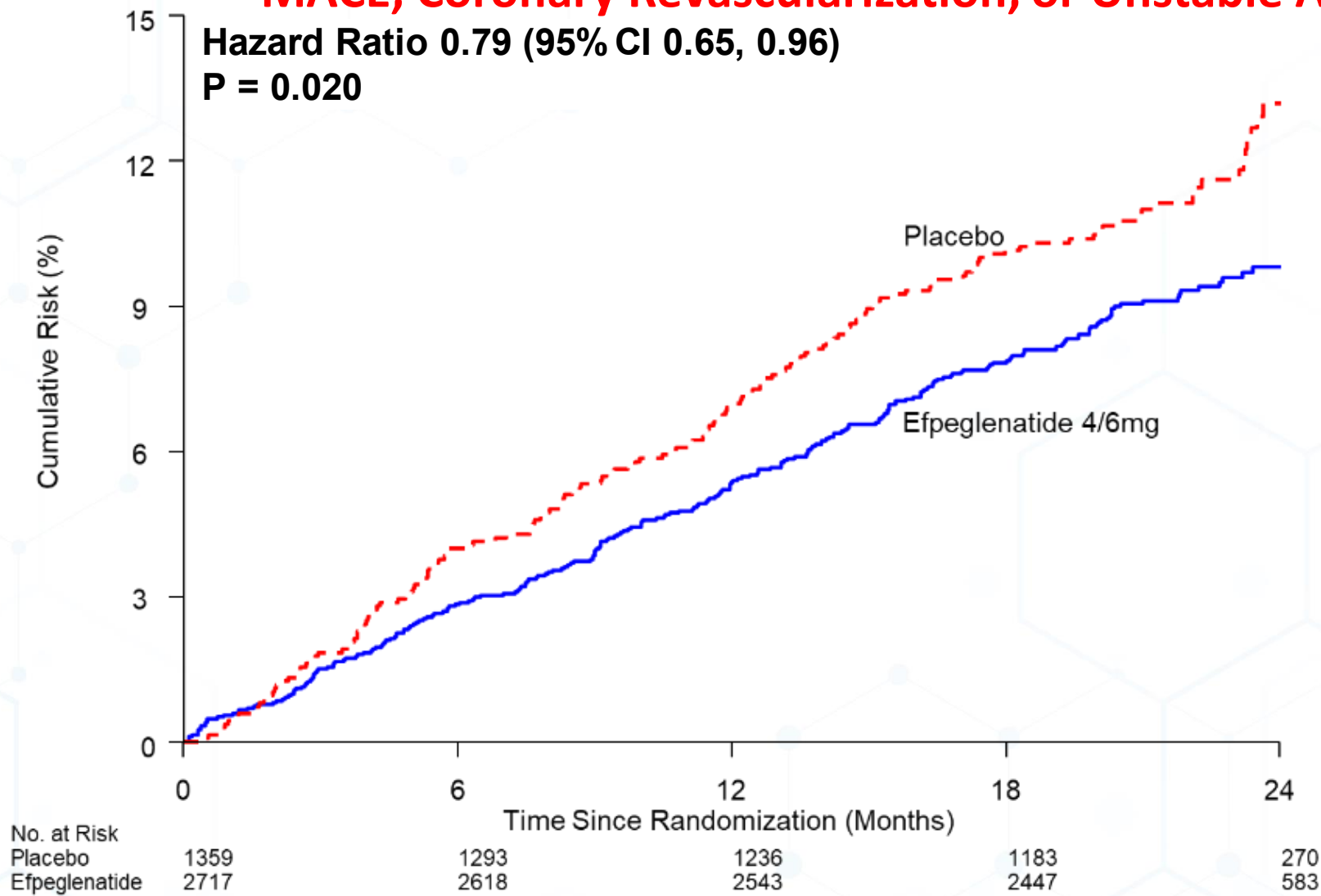


Efpeglenatide 4 or 6 mg

MACE, Coronary Revascularization, or Unstable Angina

Hazard Ratio 0.79 (95% CI 0.65, 0.96)

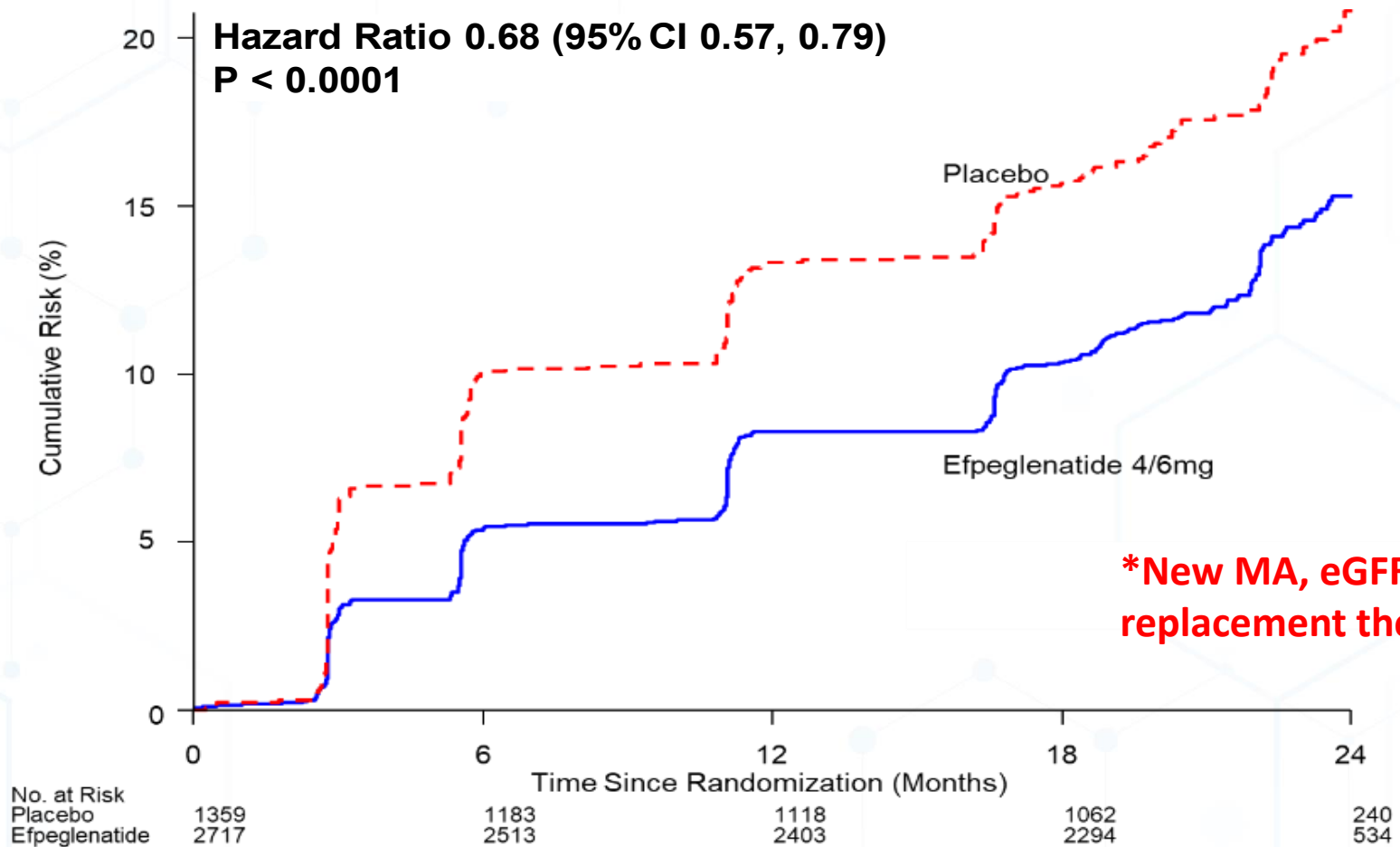
P = 0.020



↓ 21%

Efpeglenatide 4 or 6 mg

Kidney Composite Outcome*



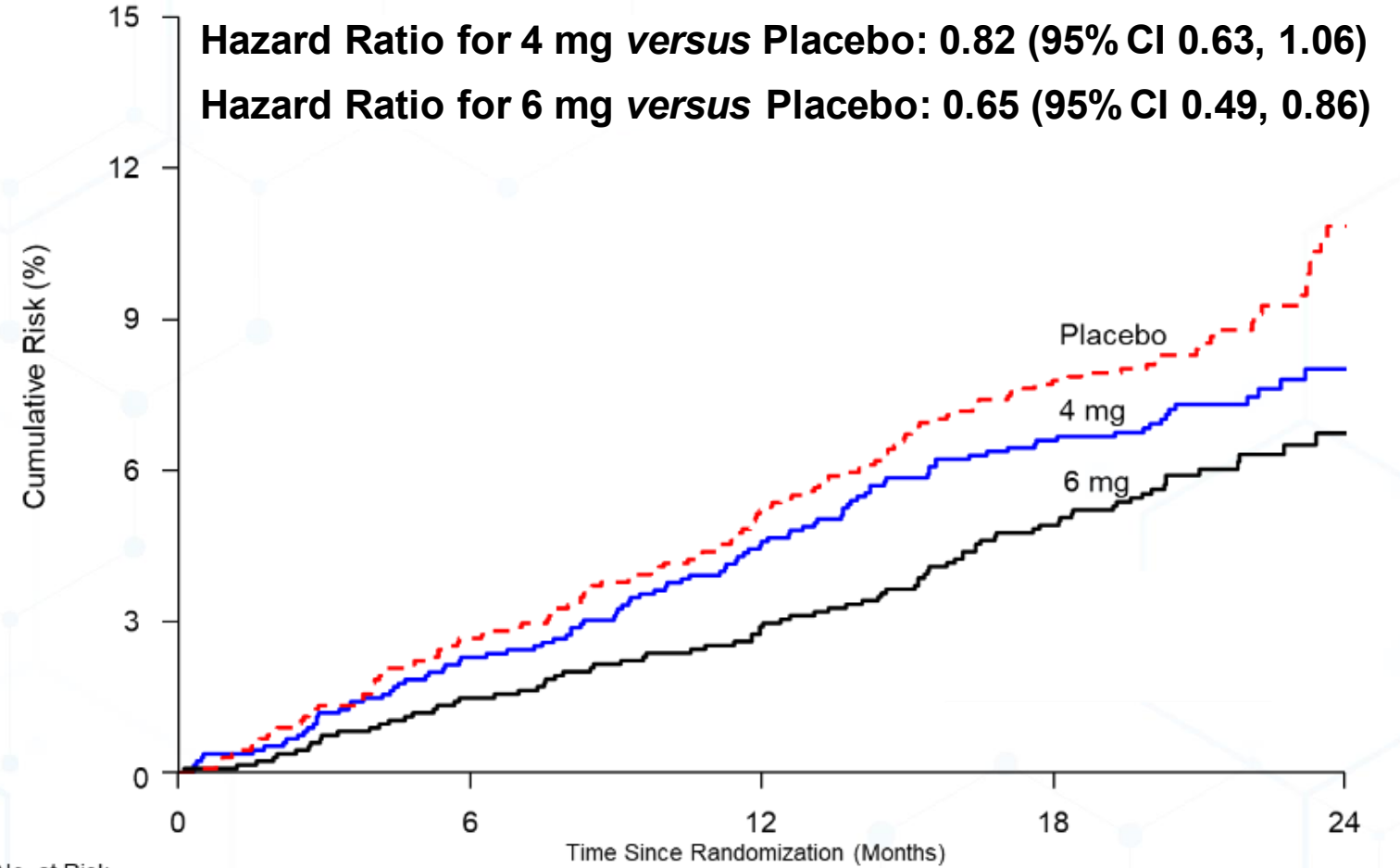
↓ 32%

*New MA, eGFR fall \geq 40%, kidney replacement therapy, or eGFR < 15

Efpeglenatide 4 and 6 mg

MACE - Exploratory

Hazard Ratio for 4 mg versus Placebo: 0.82 (95% CI 0.63, 1.06)
Hazard Ratio for 6 mg versus Placebo: 0.65 (95% CI 0.49, 0.86)



No. at Risk	0	6	12	18	24
Placebo	1359	1311	1258	1213	278
Efp. 4mg	1359	1320	1284	1242	296
Efp. 6mg	1358	1324	1303	1261	298

Number-Needed-to-Treat (1.8 Years)

Outcome	Efpeglenatide N Events (%)	Placebo N Events (%)	NNT (1.8 years)
Primary Outcome (MACE)	189 (7.0)	125 (9.2)	46
MACE, Coronary Revascularization, Unstable Angina Hospitalization	257 (9.5)	158 (11.6)	48
MACE or non-CV Death	216 (7.9)	143 (10.5)	39
Renal Composite Outcome	353 (13.0)	250 (18.4)	19

OBRIGADO !

Para acessar materiais complementares
ligados
a esta apresentação basta escanear

