
DITERPENOIDS FROM THE ROOTS OF *Annona vepretorum* Mart. (Annonaceae)

**Ana L. M. Souza^a, Jéssica F. Auzier^b, Livia M. Dutra^a, Victoria L. A. Santos^c,
Emmanoel V. Costa^b and Jackson R. G. S. Almeida^{a,*}**

^aNúcleo de Estudos e Pesquisas de Plantas Medicinais (NEPLAME), Universidade Federal do Vale do São Francisco, 56304-205 Petrolina – PE, Brasil

^bDepartamento de Química, Instituto de Ciências Exatas, Universidade Federal do Amazonas, 69080-900 Manaus – AM, Brasil

^cCentral de Análise de Fármacos, Medicamentos e Alimentos (CAFMA), Universidade Federal do Vale do São Francisco, 56304-205 Petrolina – PE, Brasil

Received: 02/27/2025; accepted: 07/03/2025; published online: 07/21/2025

*e-mail: jackson.guedes@univasf.edu.br

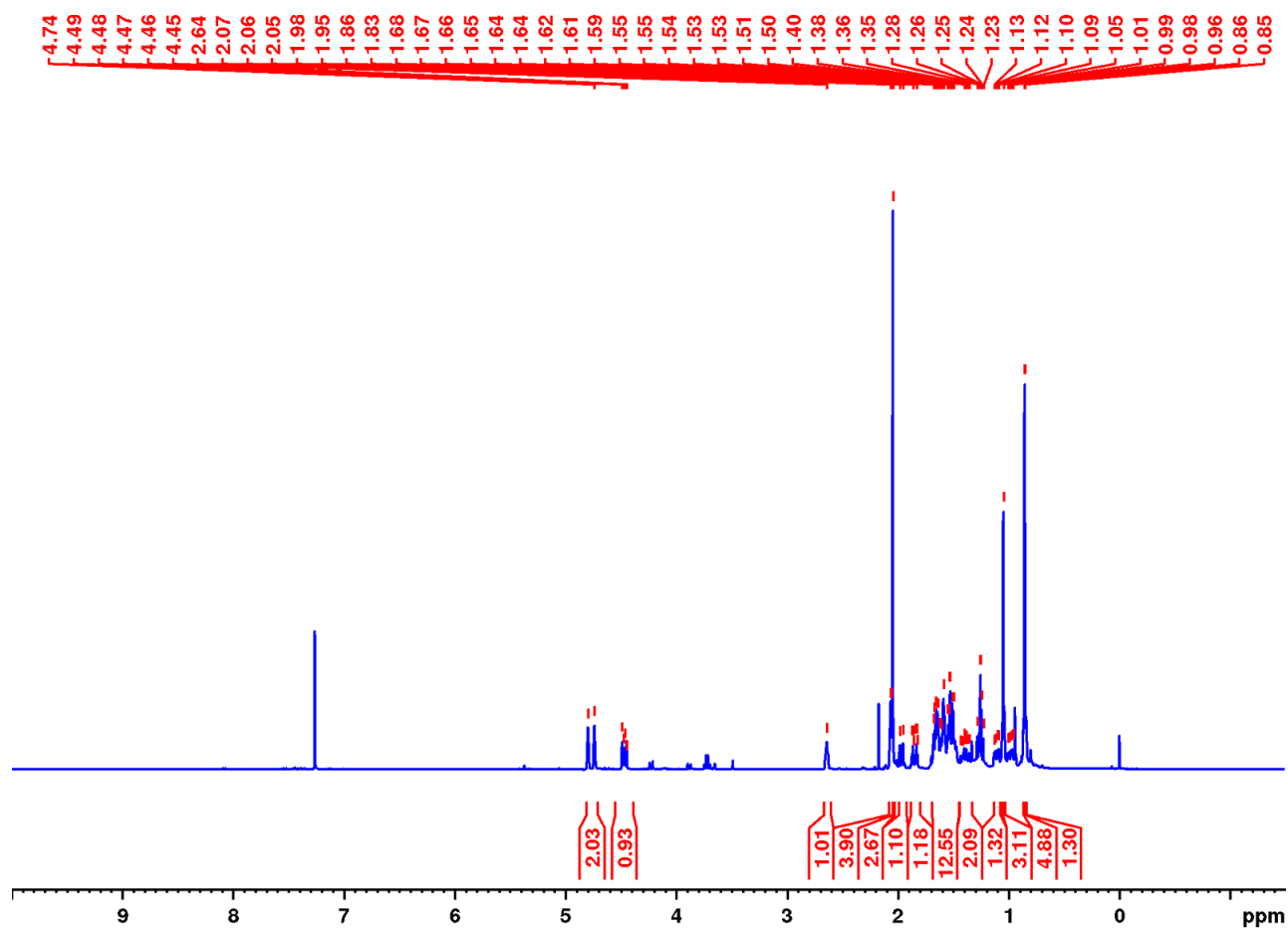


Figure 1S. ¹H NMR spectrum of compound 1 (CDCl₃, 400 MHz)

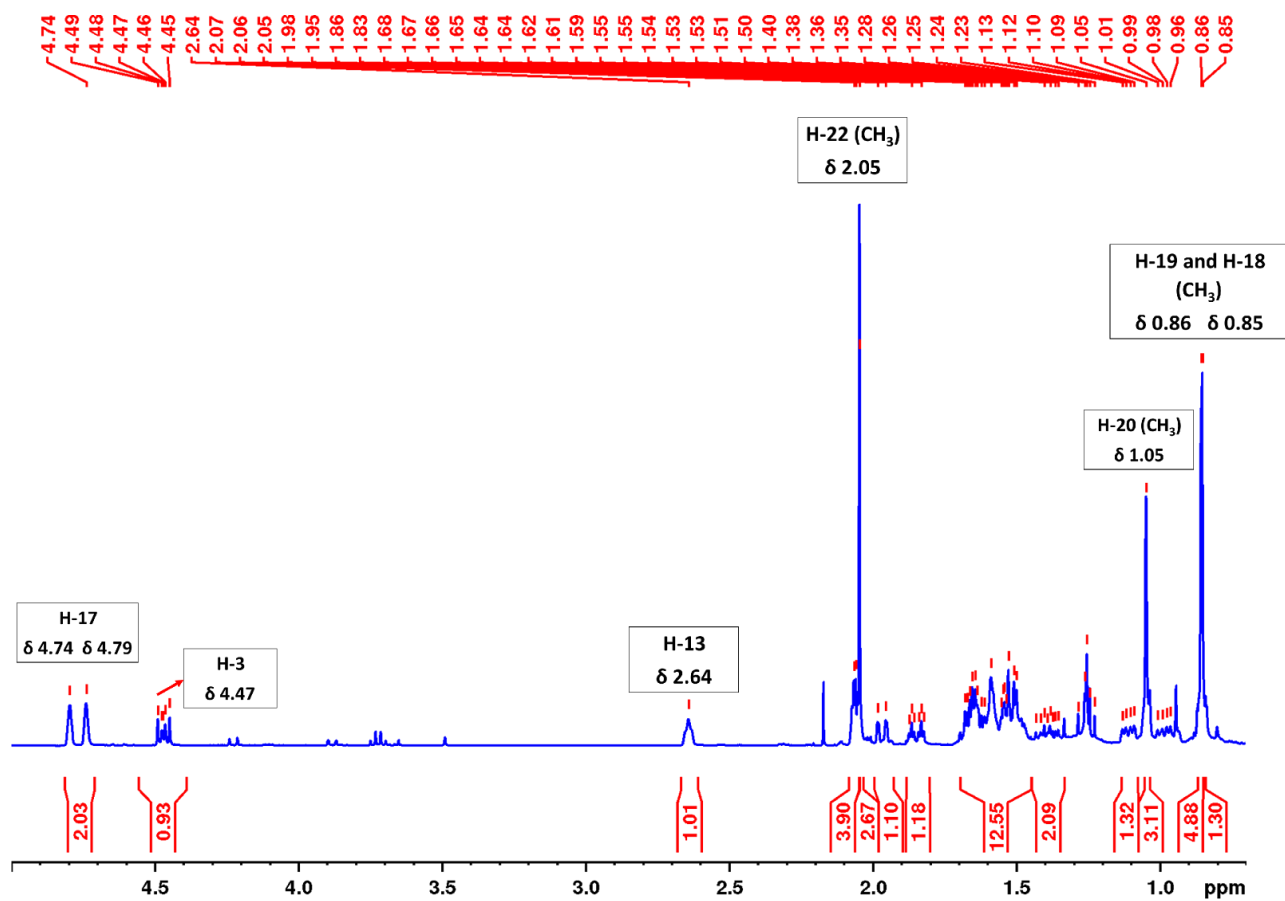


Figure 2S. Expansion (δ 5.00-0.70) of ^1H NMR spectrum of compound **1** (CDCl_3 , 400 MHz)

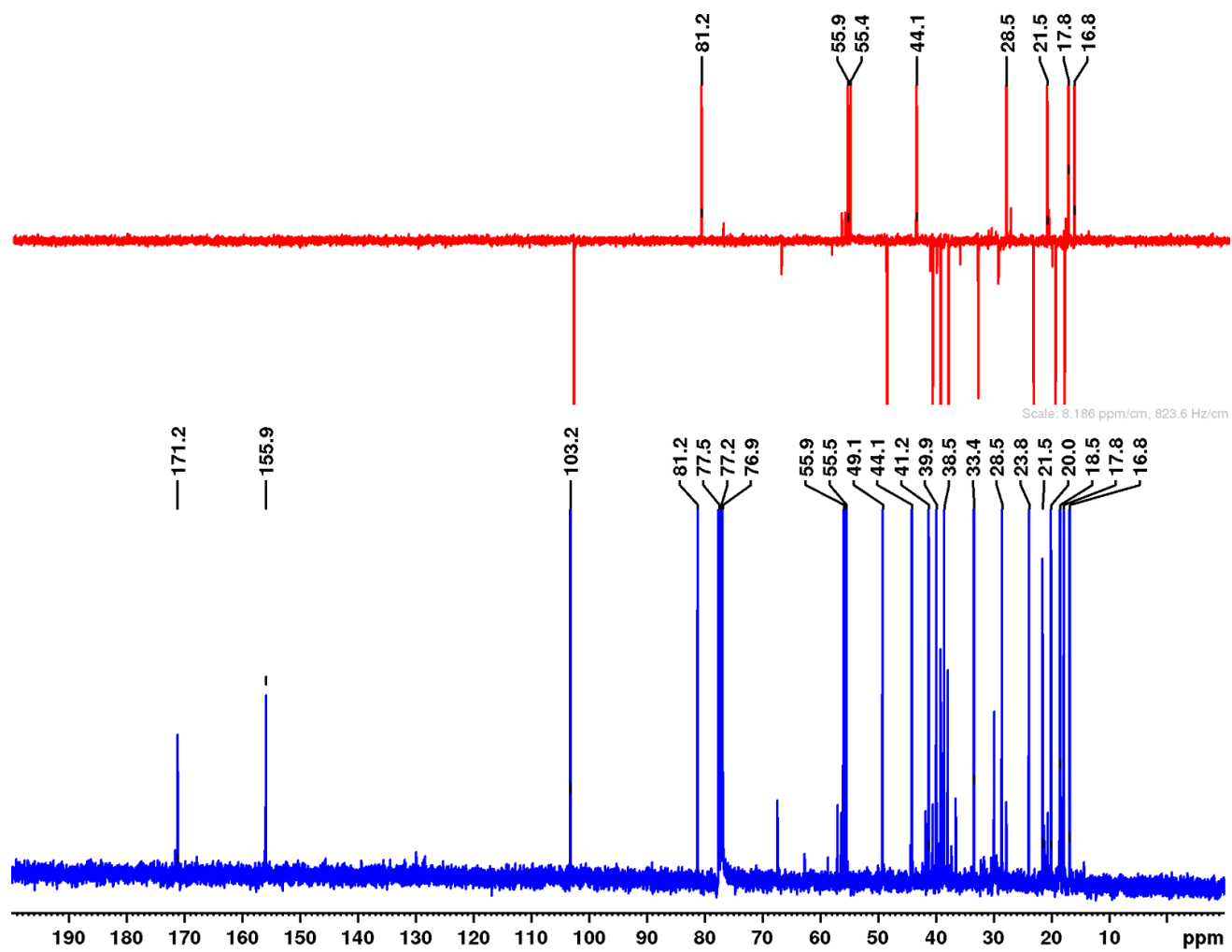


Figure 3S. ^{13}C NMR spectrum and DEPT of compound **1** (CDCl_3 , 100 MHz)

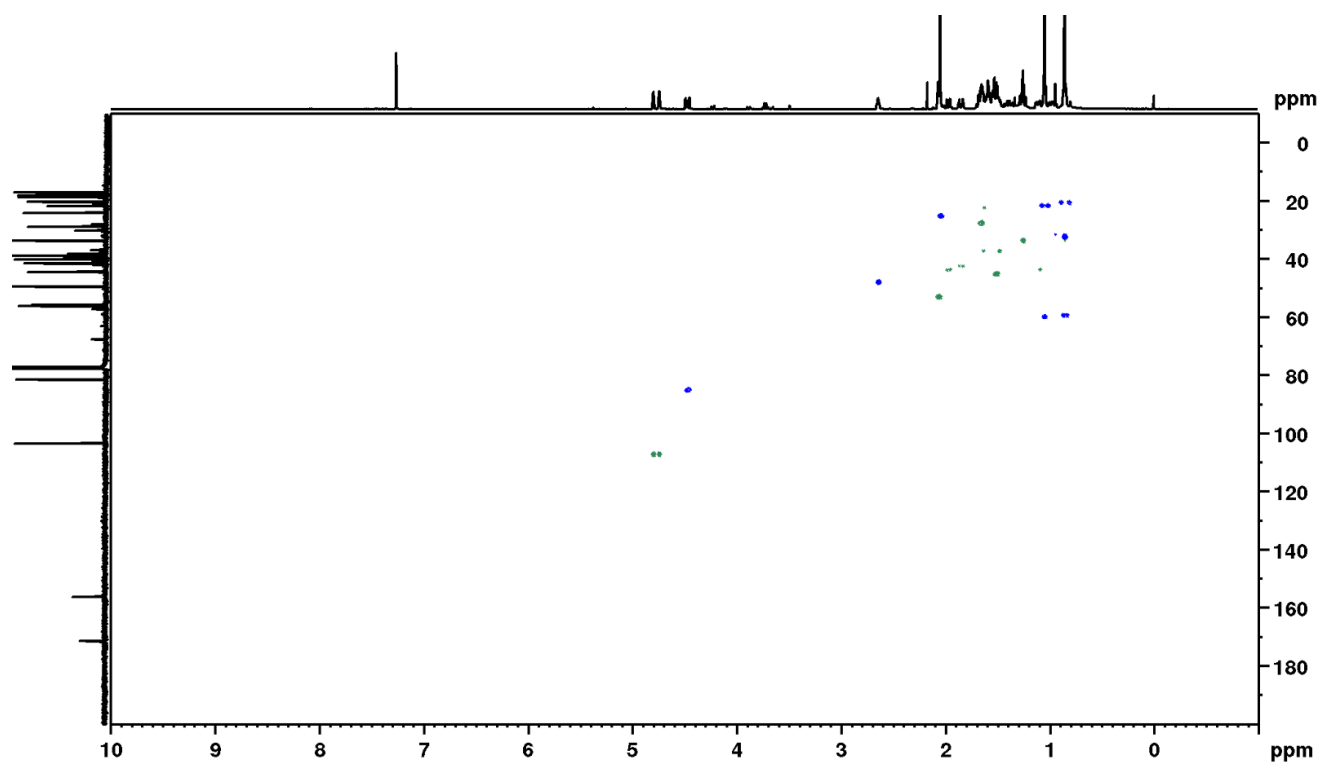


Figure 4S. One-bond ^1H - ^{13}C correlation map from HSQC NMR experiment of compound **1** (CDCl_3 , 400 (^1H) and 100 MHz (^{13}C), respectively)

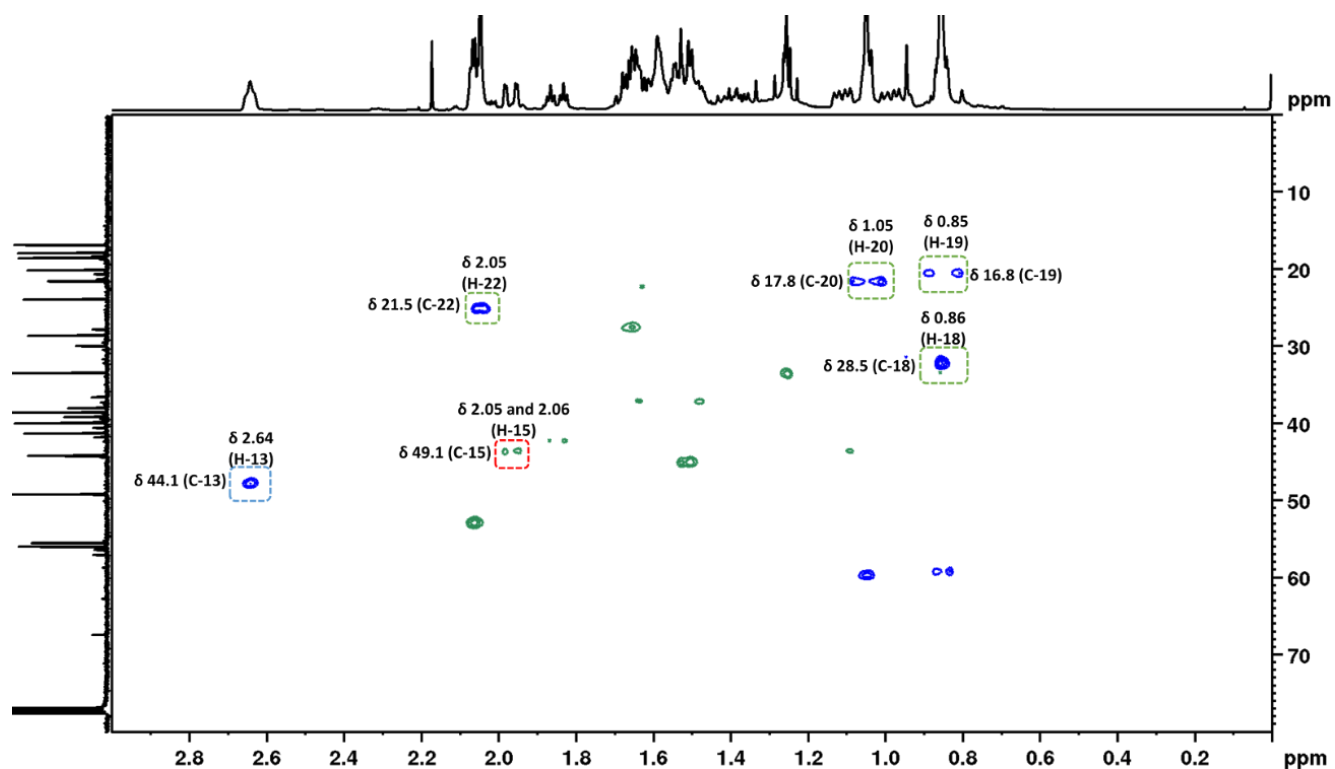


Figure 5S. Expansion (δ 3.00-0.00) of one-bond ^1H - ^{13}C correlation map from HSQC NMR experiment of compound **1** (CDCl_3 , 400 (^1H) and 100 MHz (^{13}C), respectively)

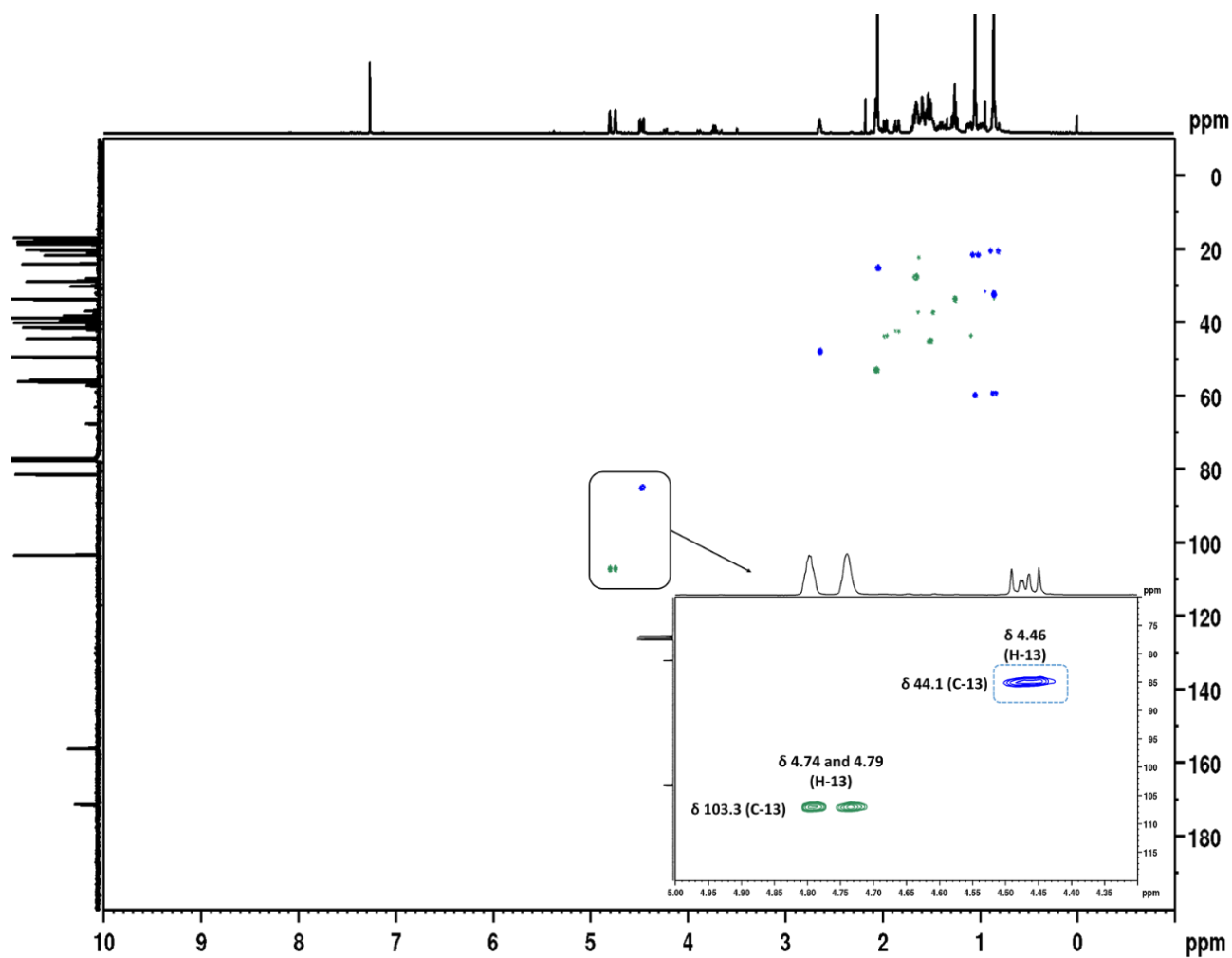


Figure 6S. Expansion (δ 5.00-4.00) of one-bond ^1H - ^{13}C correlation map from HSQC NMR experiment of compound **1** (CDCl_3 , 400 (^1H) and 100 MHz (^{13}C), respectively)

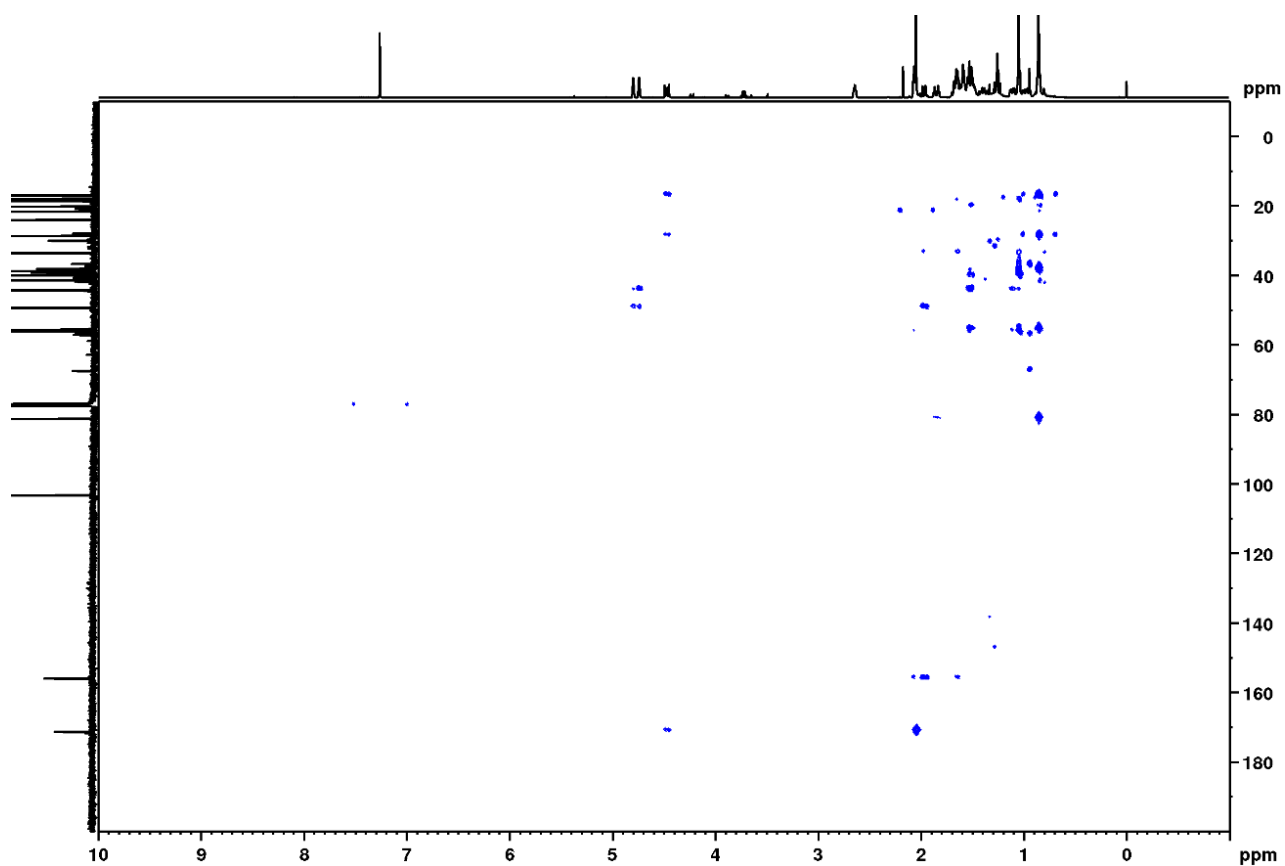


Figure 7S. Long-range ^1H - ^{13}C correlation map from HMBC NMR experiment of compound **1** (CDCl_3 , 400 (^1H) and 100 MHz (^{13}C), respectively)

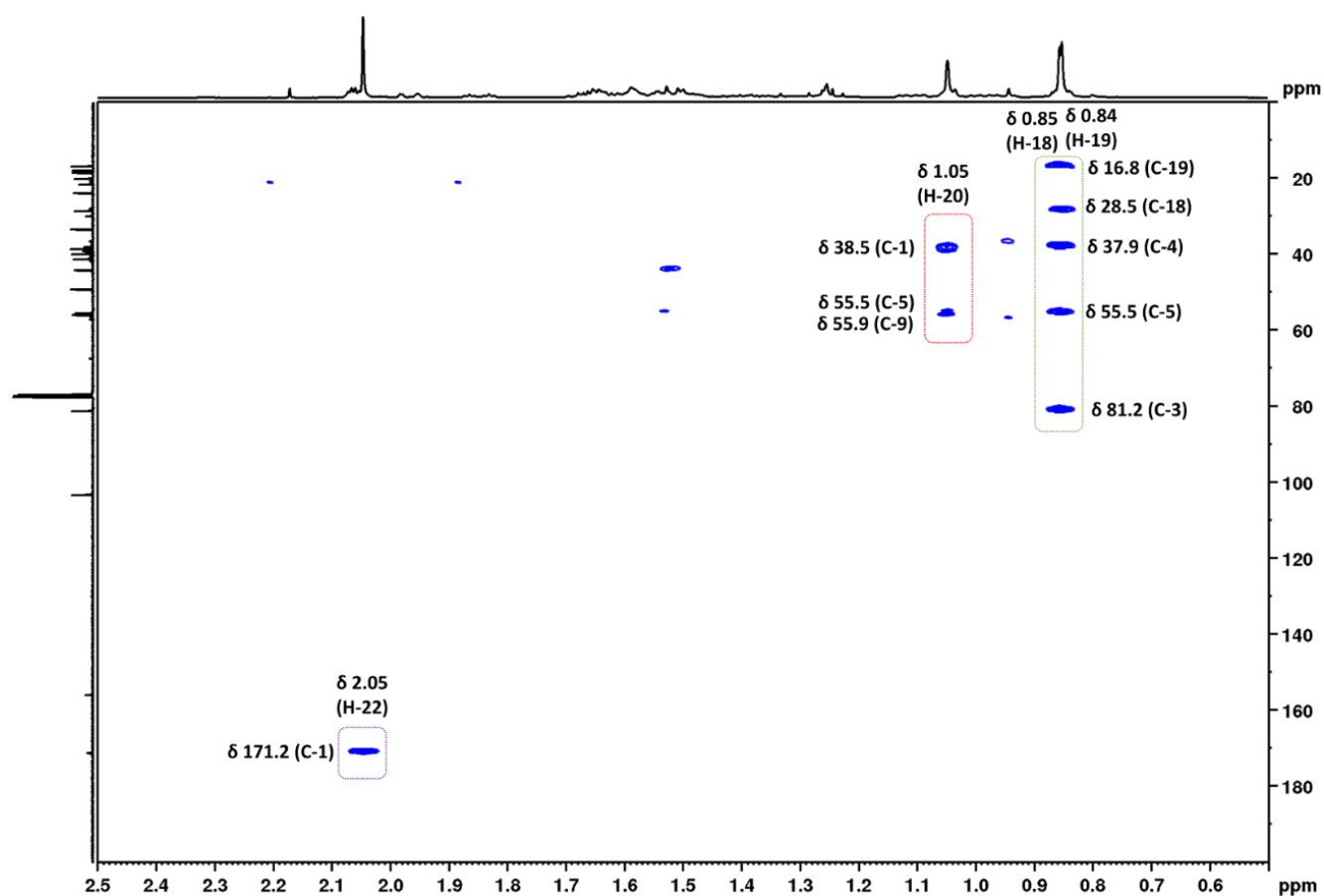


Figure 8S. Expansion (δ 2.50-0.50) of the long-range ^1H - ^{13}C correlation map from HMBC NMR experiment of compound **1** (CDCl_3 , 400 (^1H) and 100 MHz (^{13}C), respectively)

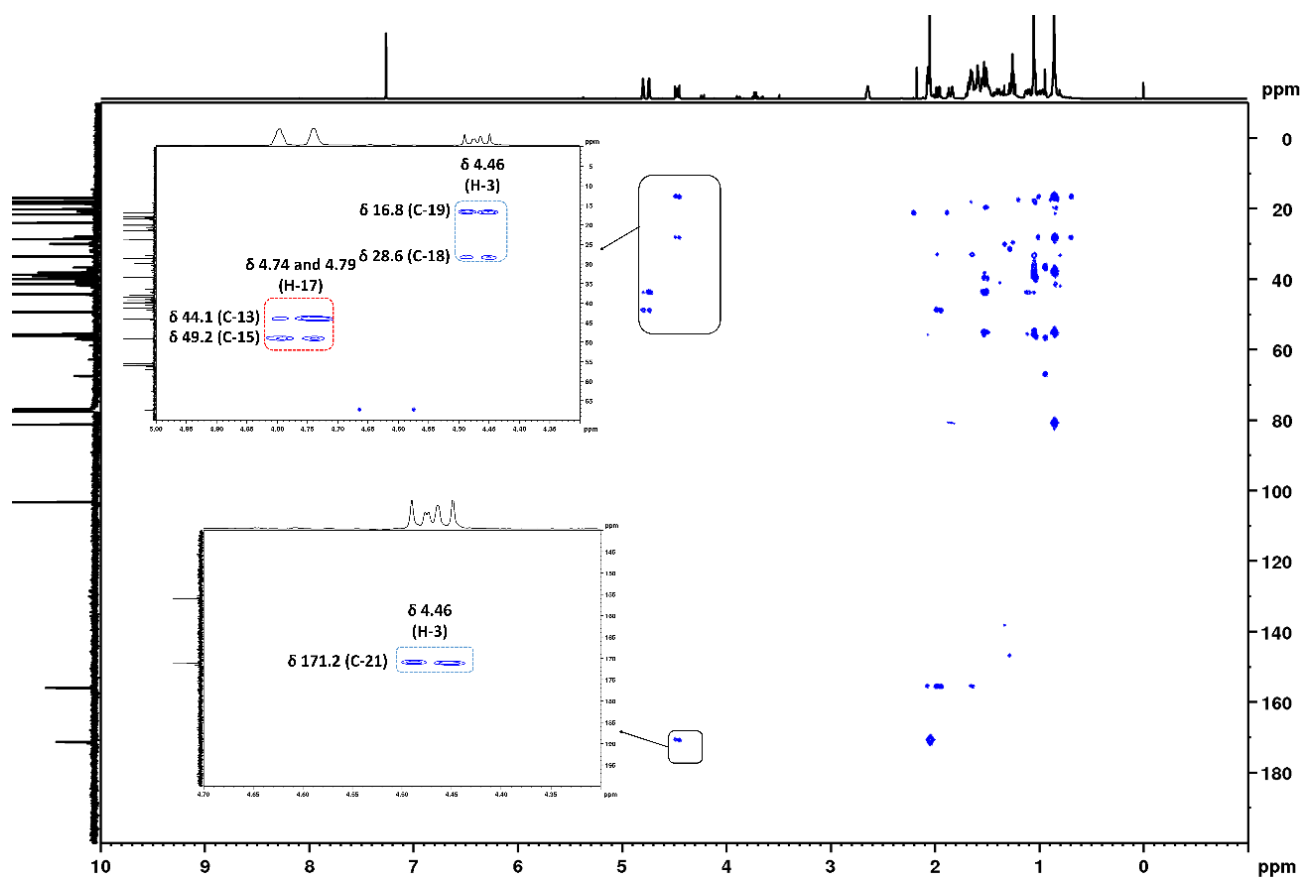


Figure 9S. Expansion region of observed correlations in long-range ^1H - ^{13}C correlation map from HMBC NMR experiment of compound 1 (CDCl_3 , 400 (^1H) and 100 MHz (^{13}C), respectively)

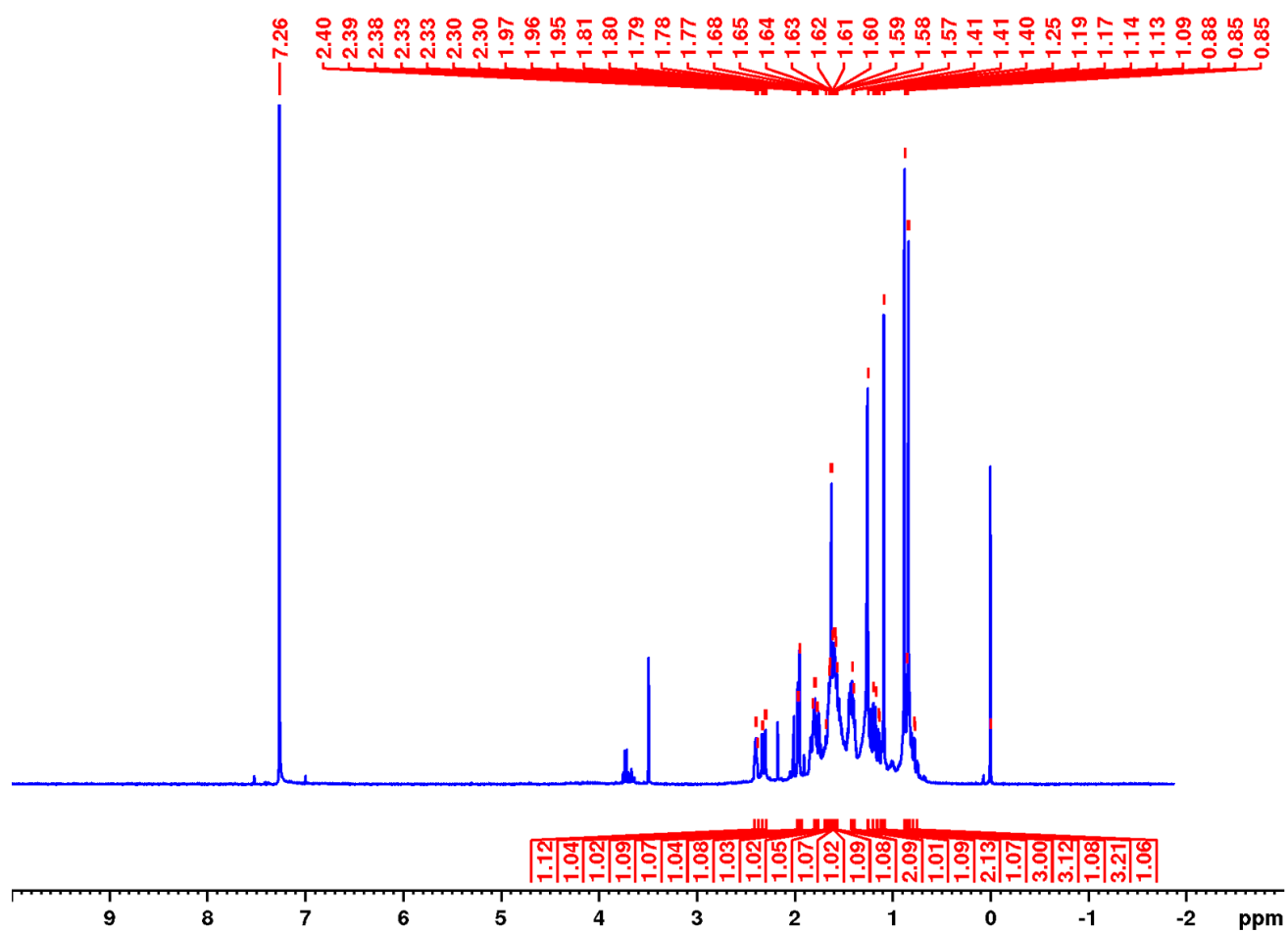


Figure 10S. ^1H NMR spectrum of compound **2** (CDCl_3 , 400 MHz)

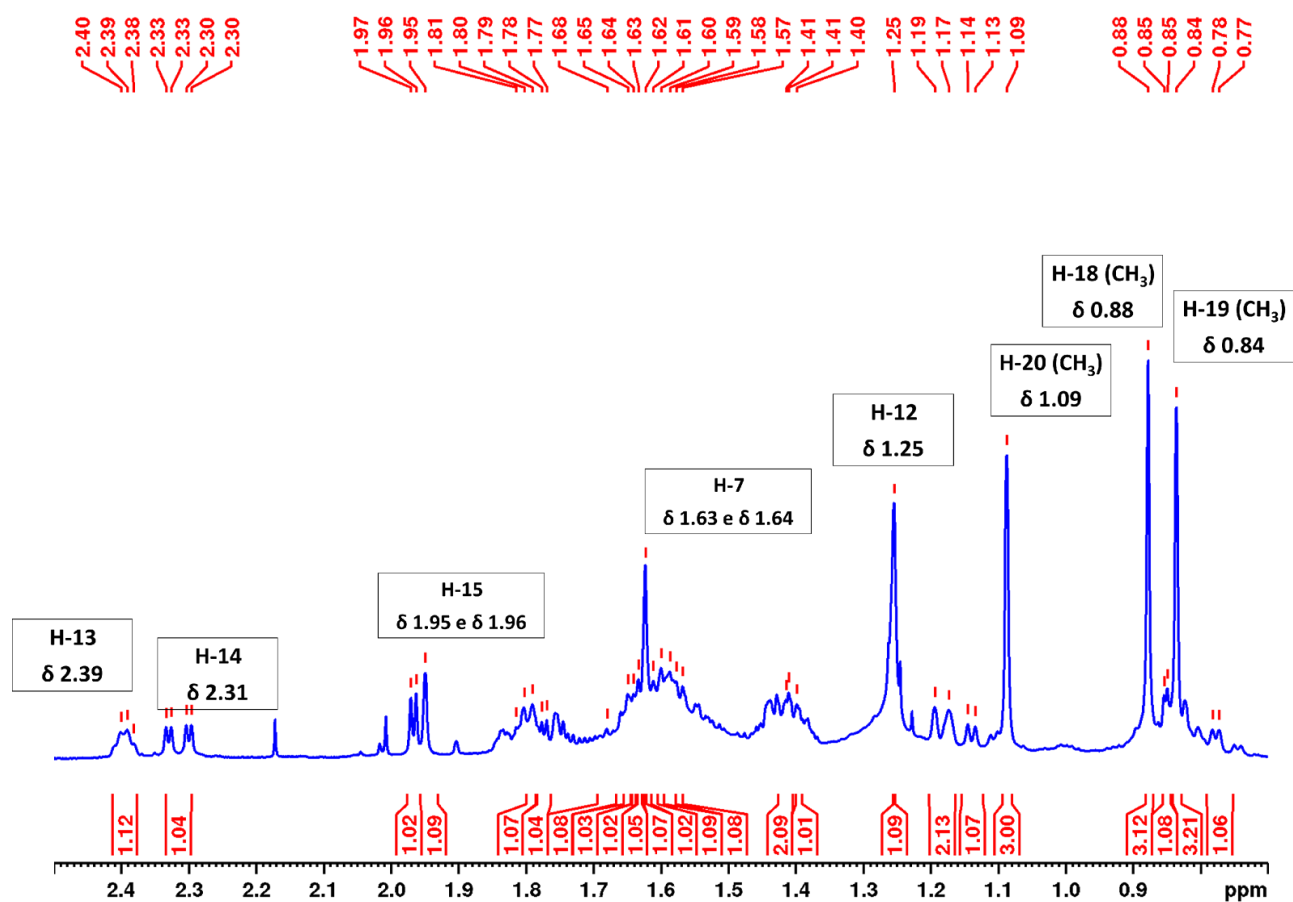


Figure 11S. Expansion (δ 2.50-0.70) of ^1H NMR spectrum of compound **2** (CDCl_3 , 400 MHz)

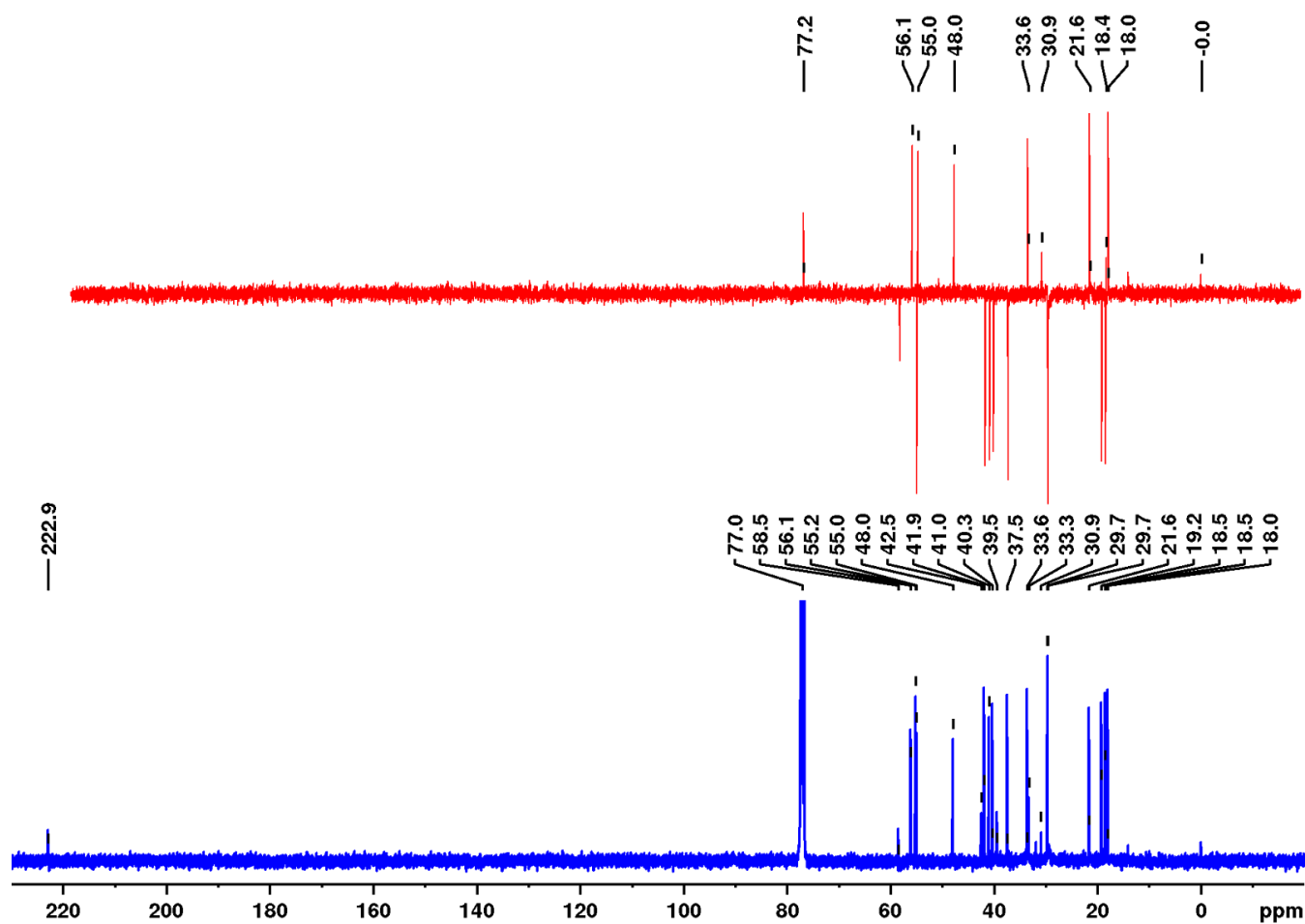


Figure 12S. ^{13}C NMR spectrum and DEPT of compound 2 (CDCl₃, 100 MHz)

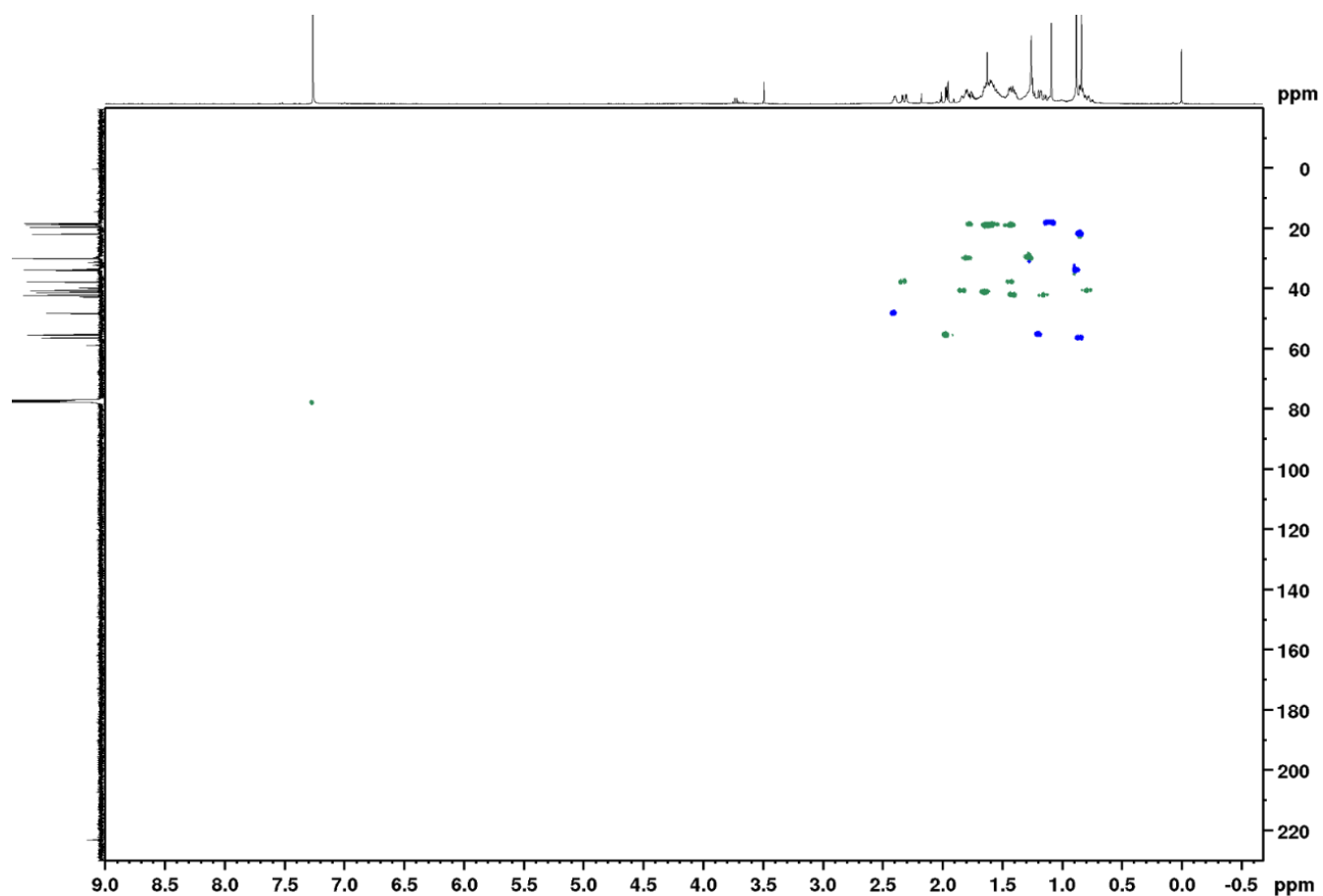


Figure 13S. One-bond ^1H - ^{13}C correlation map from HSQC NMR experiment of compound **2** (CDCl_3 , 400 (^1H) and 100 MHz (^{13}C), respectively)

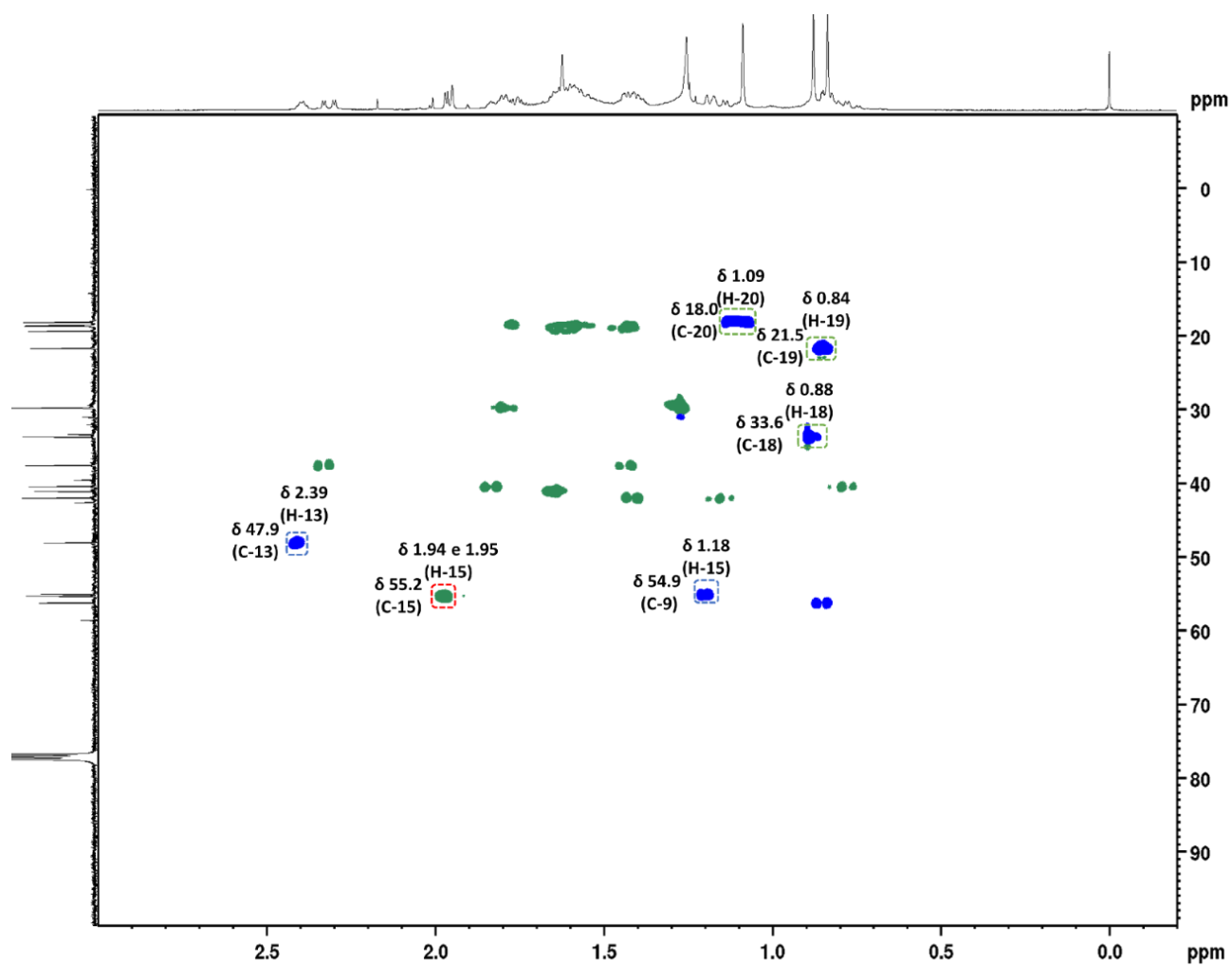


Figure 14S. Expansion (δ 3.00-0.50) of one-bond ^1H - ^{13}C correlation map from HSQC NMR experiment of compound **2** (CDCl_3 , 400 (^1H) and 100 MHz (^{13}C), respectively)

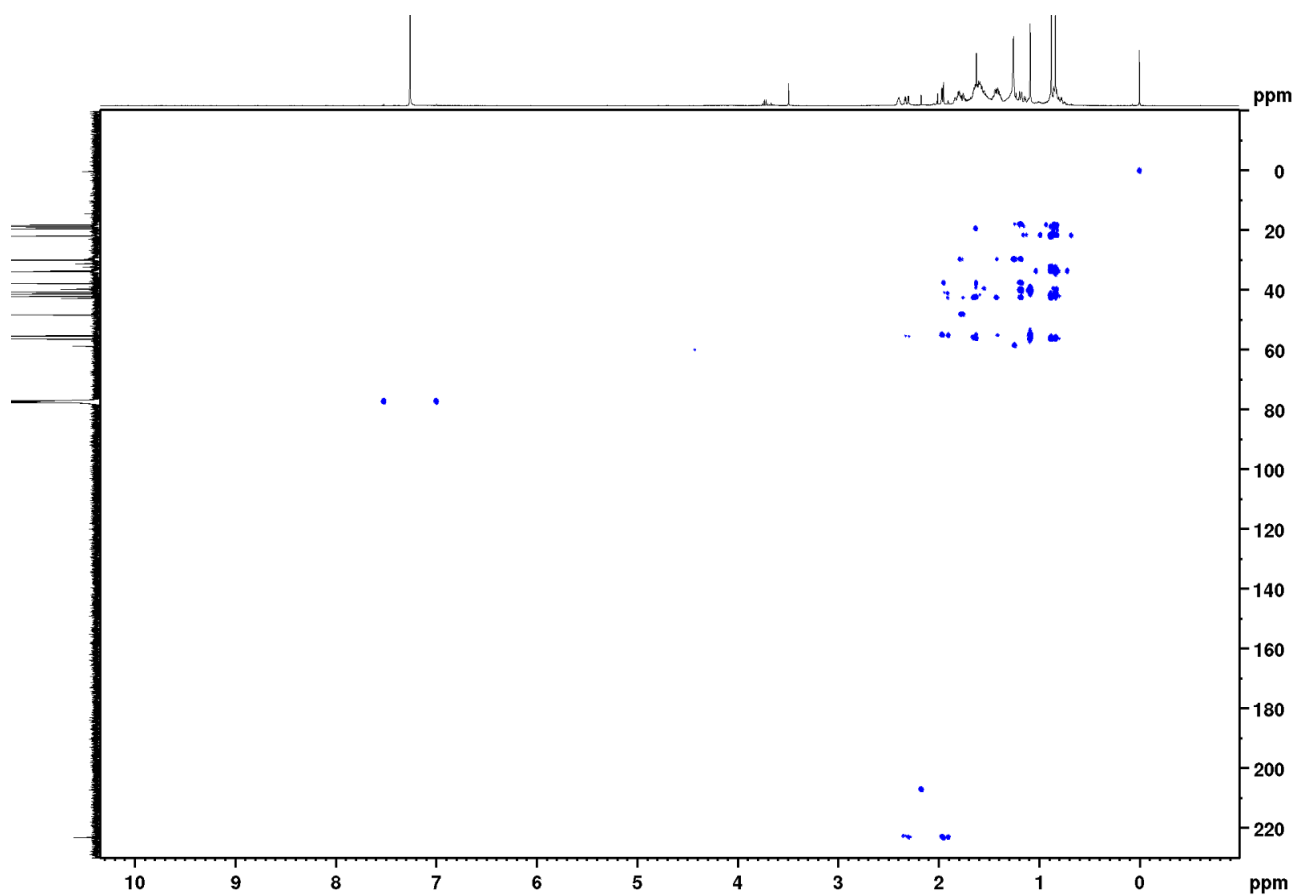


Figure 15S. Long-range ^1H - ^{13}C correlation map from HMBC NMR experiment of compound **2** (CDCl_3 , 400 (^1H) and 100 MHz (^{13}C), respectively)

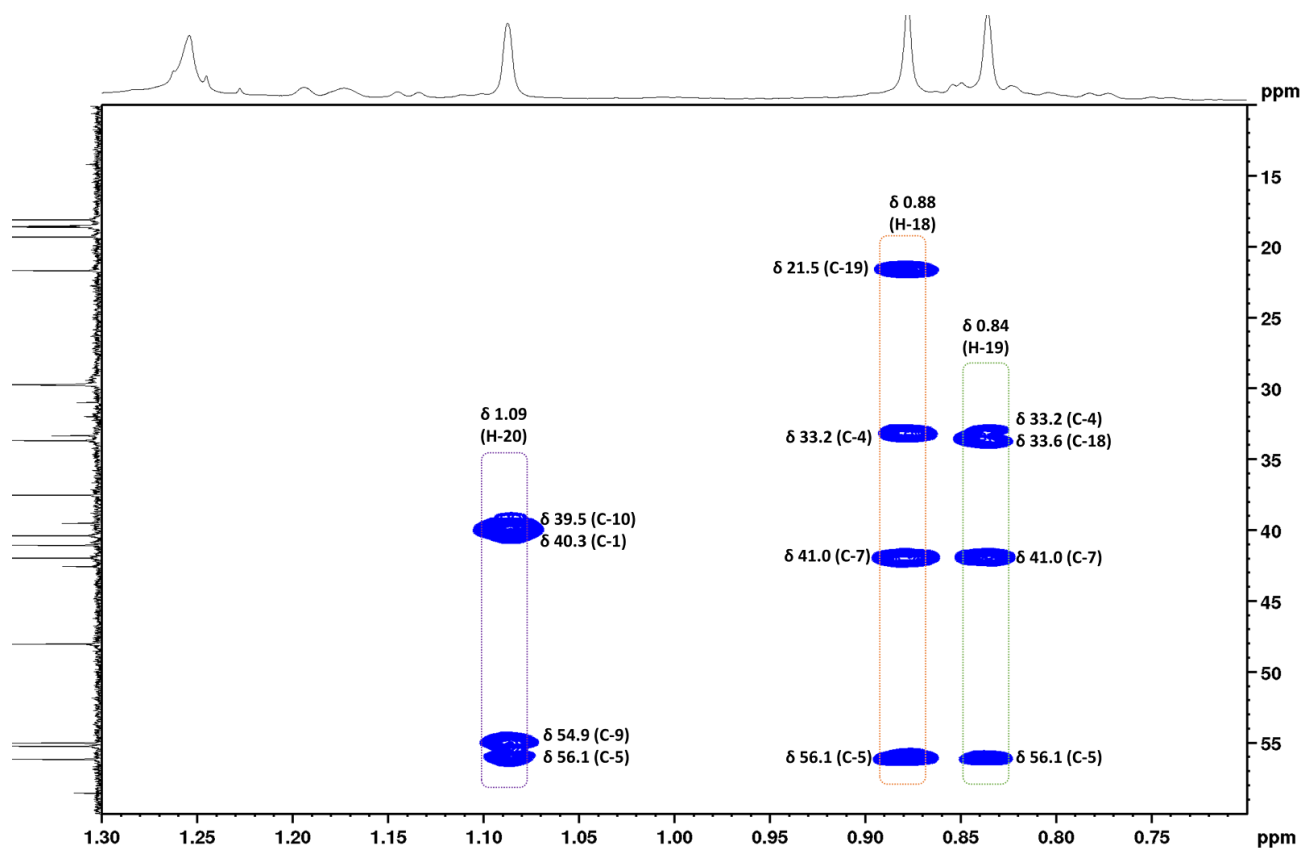


Figure 16S. Expansion (δ 1.30-0.70) of the long-range ^1H - ^{13}C correlation map from HMBC NMR experiment of compound **2** (CDCl_3 , 400 (^1H) and 100 MHz (^{13}C), respectively)

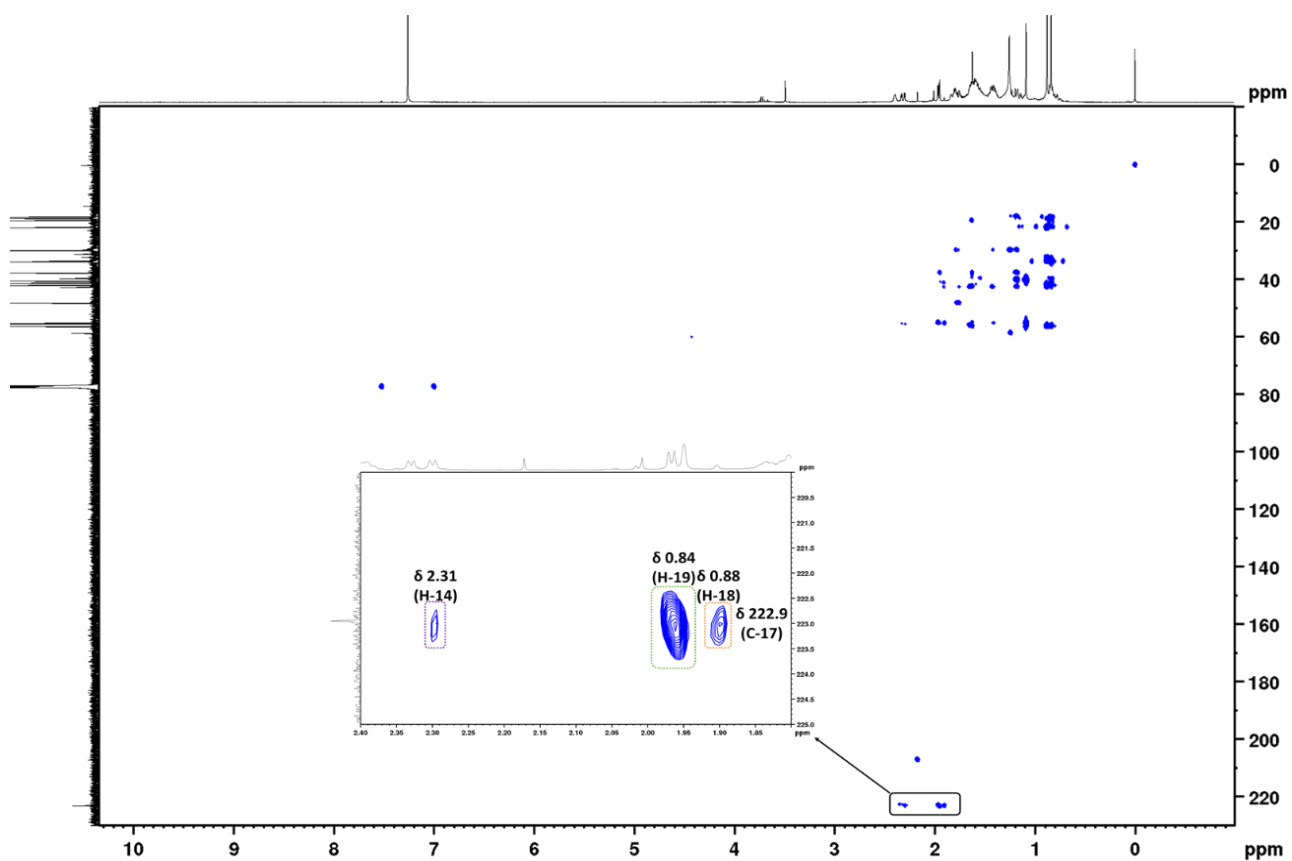


Figure 17S. Expansion region of observed C-17 correlations in long-range ^1H - ^{13}C correlation map from HMBC NMR experiment of compound **2** (CDCl_3 , 400 (^1H) and 100 MHz (^{13}C), respectively)

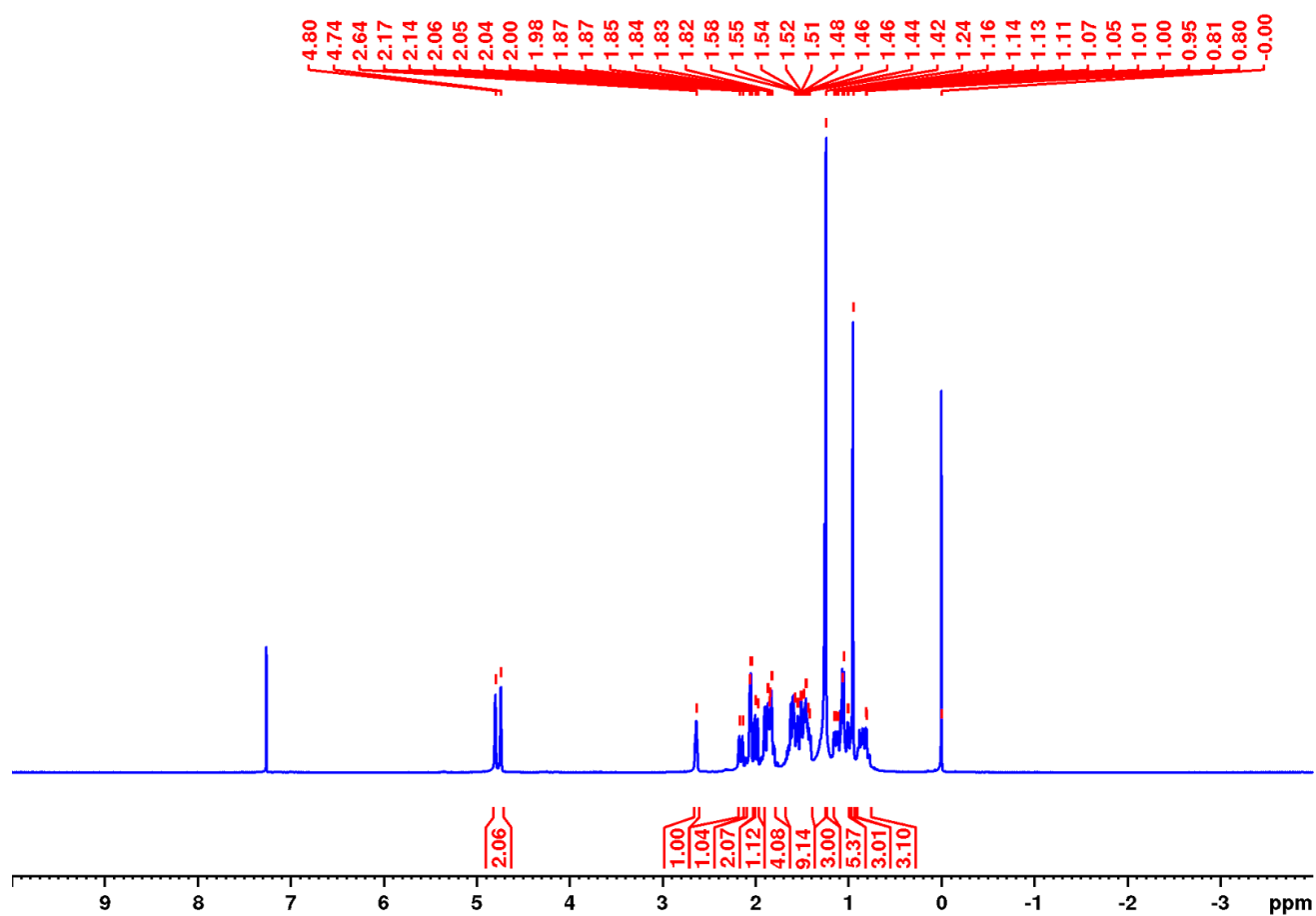


Figure 18S. ¹H NMR spectrum of compound 3 (CDCl₃, 400 MHz)

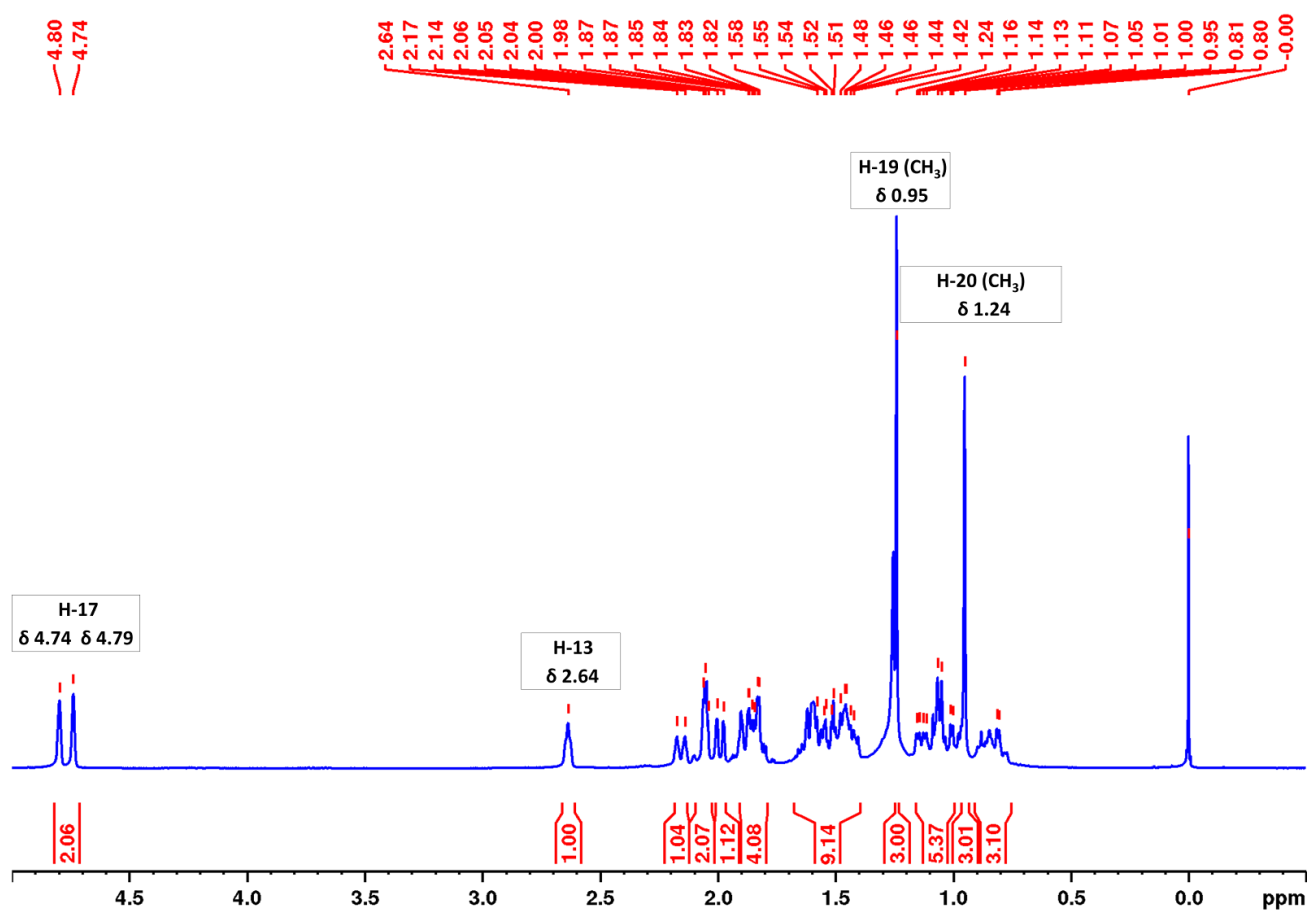


Figure 19S. Expansion (δ 5.00-0.50) of ^1H NMR spectrum of compound 3 (CDCl_3 , 400 MHz)

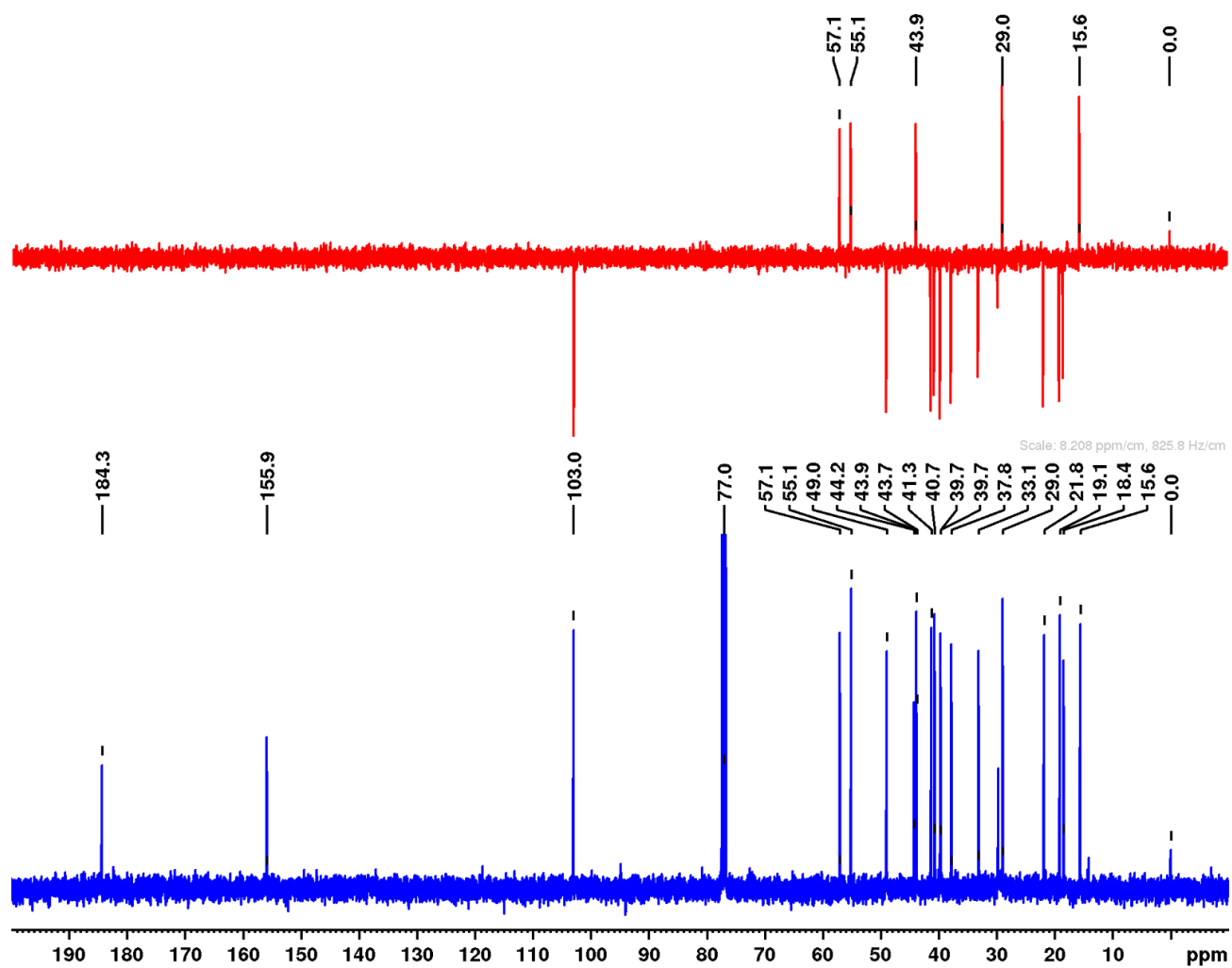


Figure 20S. ^{13}C NMR spectrum and DEPT of compound **3** (CDCl_3 at 100 MHz)

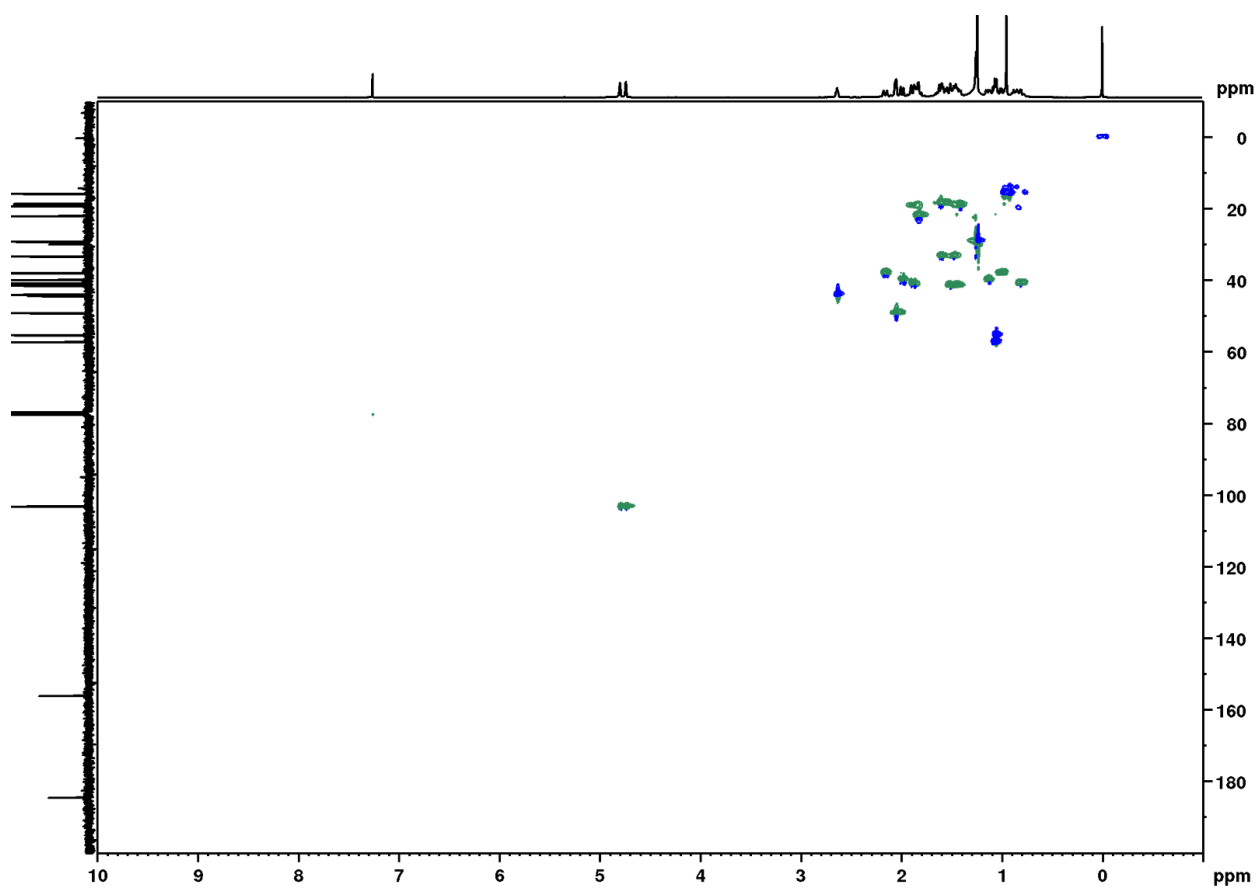


Figure 21S. One-bond ^1H - ^{13}C correlation map from HSQC NMR experiment of compound **3** (CDCl_3 , 400 (^1H) and 100 MHz (^{13}C), respectively)

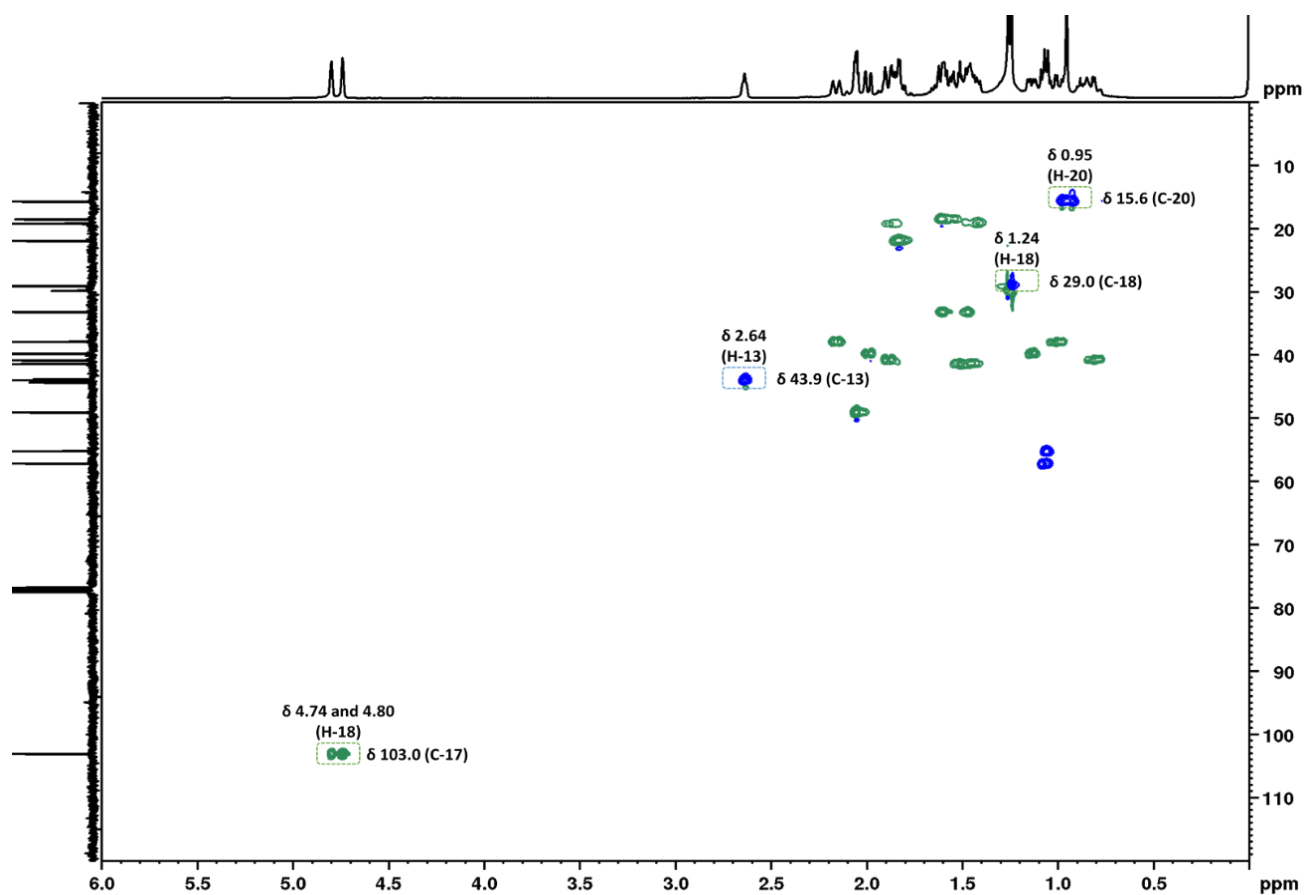


Figure 22S. Expansion (δ 6.00-0.00) of one-bond ^1H - ^{13}C correlation map from HSQC NMR experiment of compound **3** (CDCl₃, 400 (^1H) and 100 MHz (^{13}C), respectively)

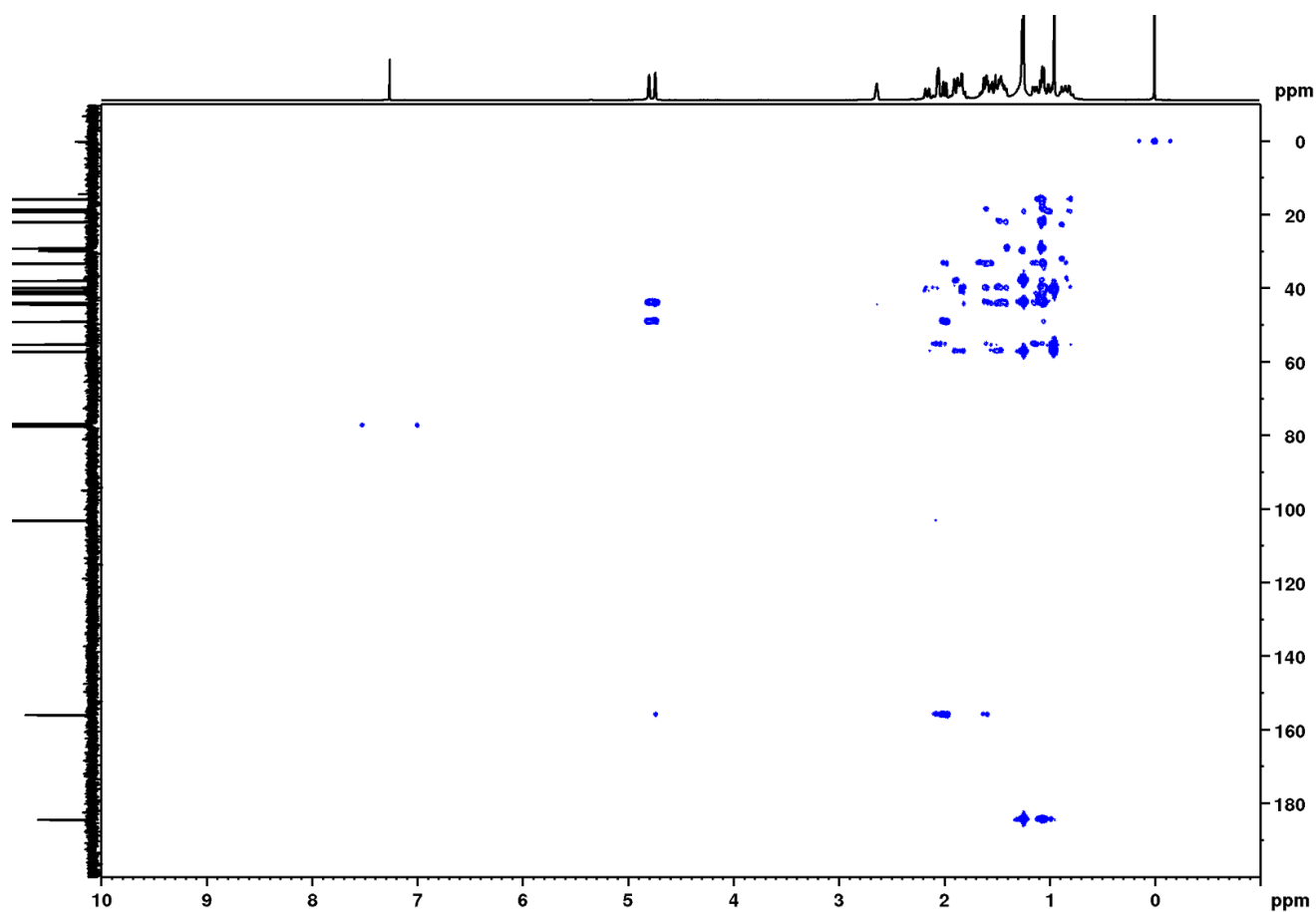


Figure 23S. Long-range ^1H - ^{13}C correlation map from HMBC NMR experiment of compound **3** (CDCl_3 , 400 (^1H) and 100 MHz (^{13}C), respectively)

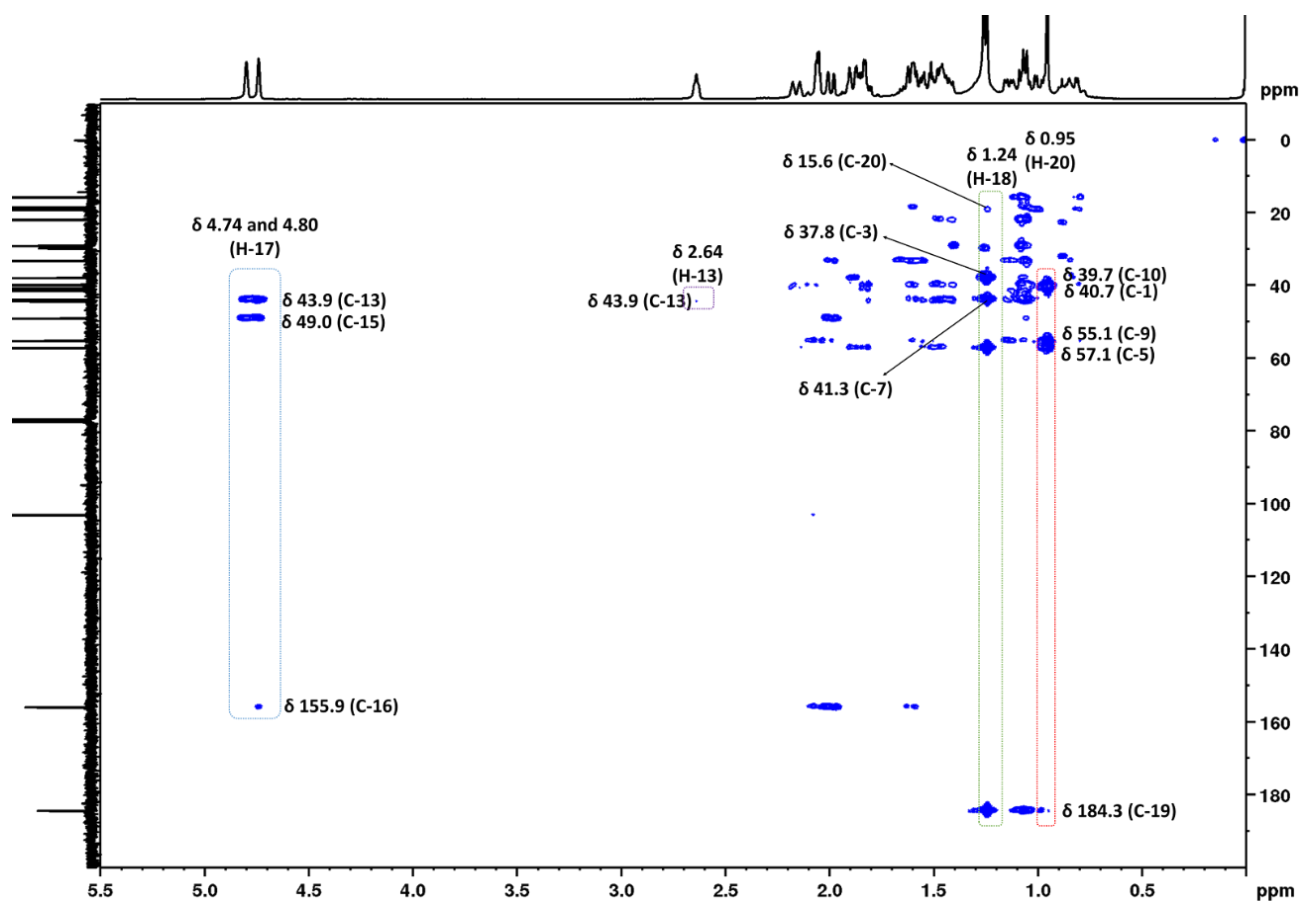


Figure 24S. Expansion (δ 5.50-0.00) of one-bond ^1H - ^{13}C correlation map from HSQC NMR experiment of compound **3** (CDCl_3 , 400 (^1H) and 100 MHz (^{13}C), respectively)

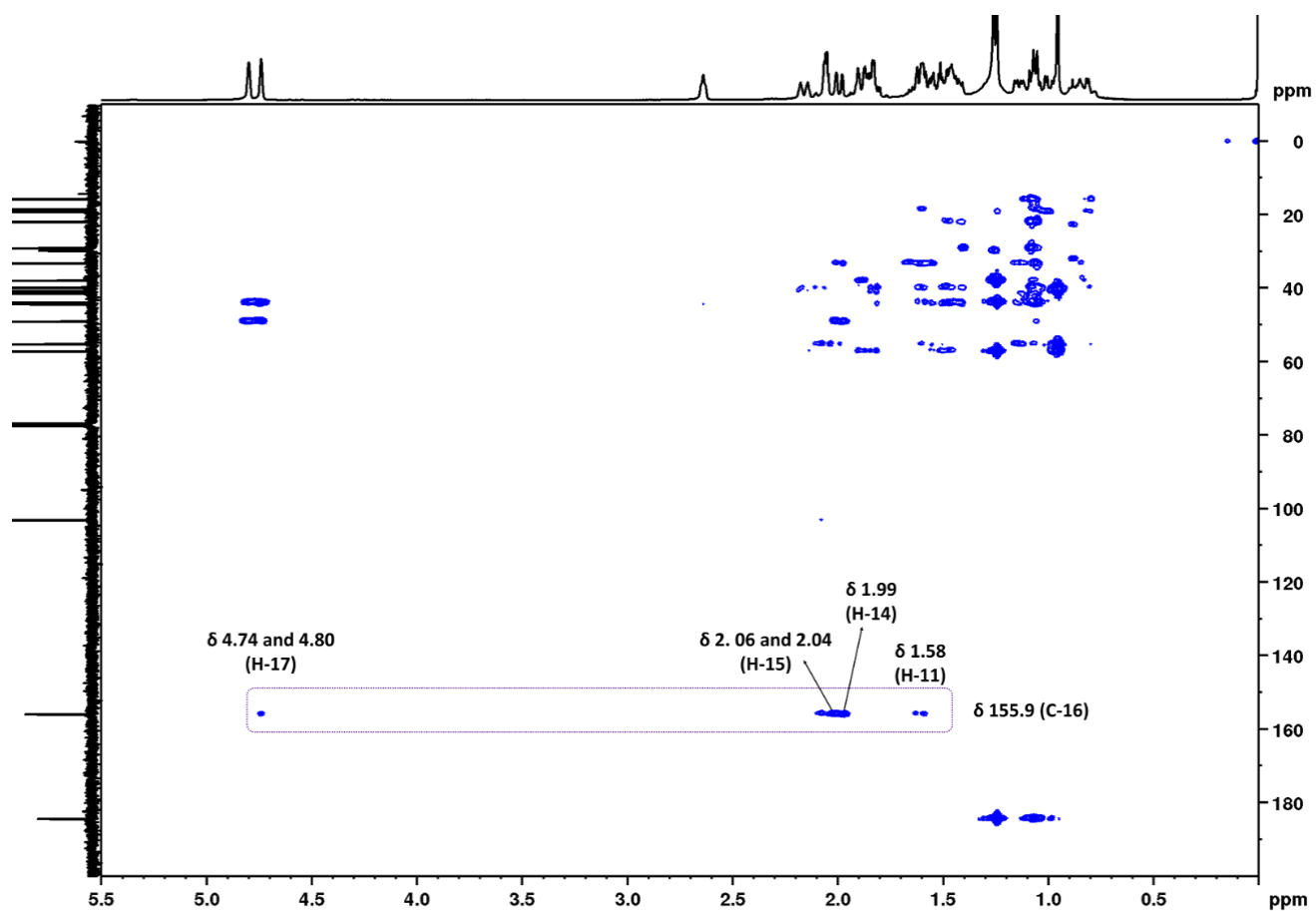


Figure 25S. Expansion region of observed C-16 correlations in long-range ^1H - ^{13}C correlation map from HMBC NMR experiment of compound **3** (CDCl_3 , 400 (^1H) and 100 MHz (^{13}C), respectively)

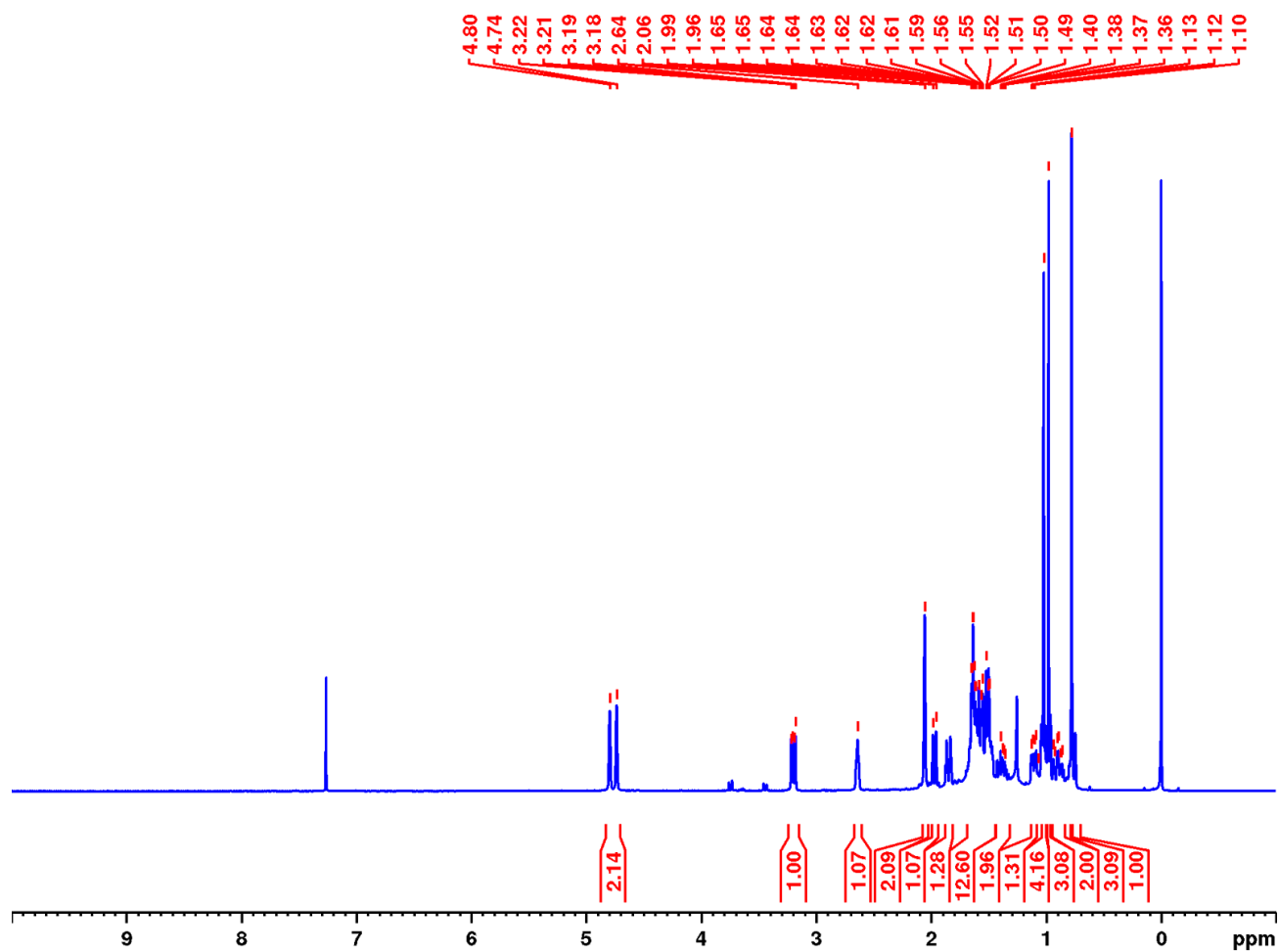


Figure 26S. ^1H NMR spectrum of compound 4 (CDCl_3 , 400 MHz)

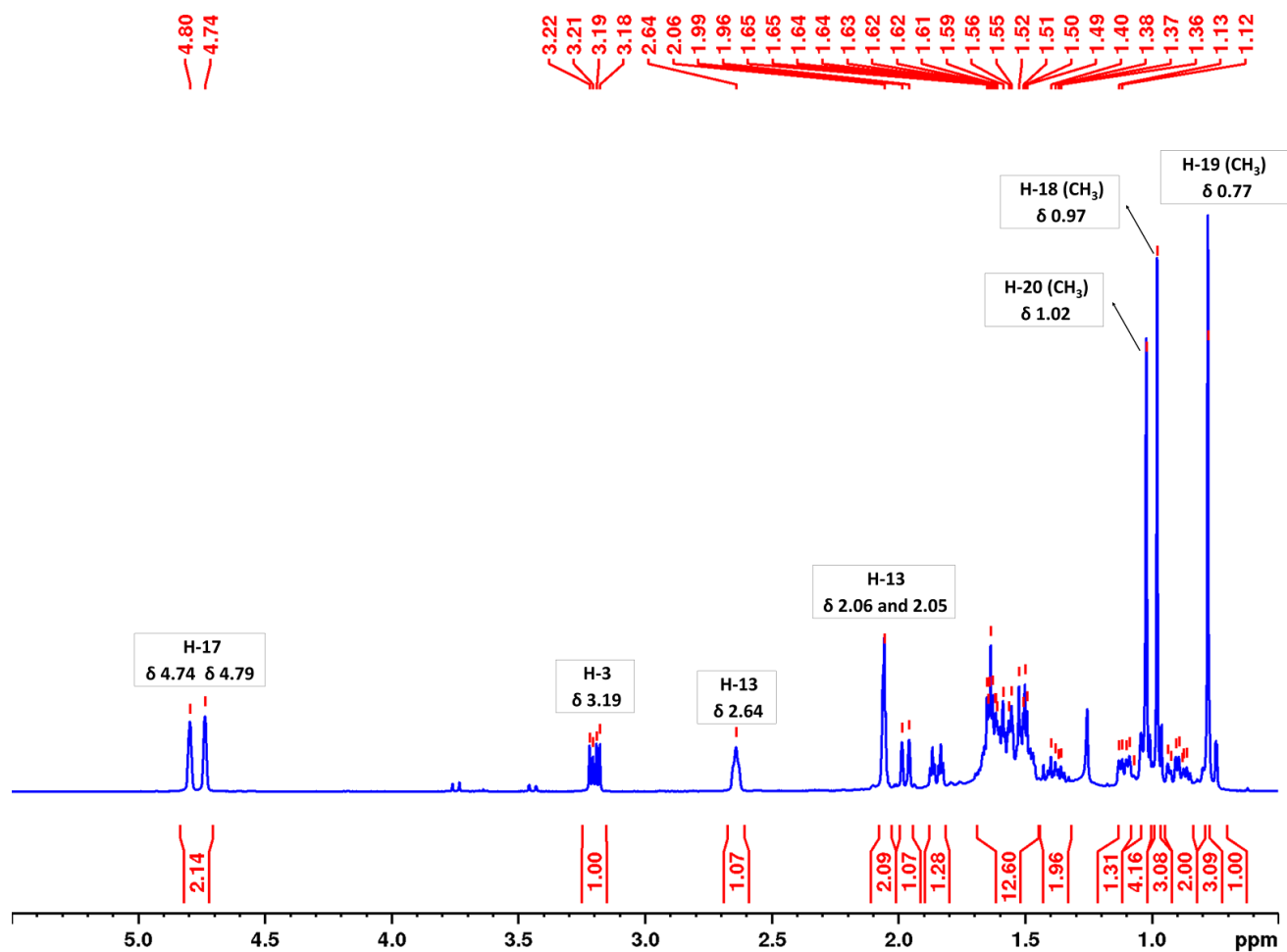


Figure 27S. Expansion (δ 5.50-0.50) of ^1H NMR spectrum of compound **4** (CDCl_3 , 400 MHz)

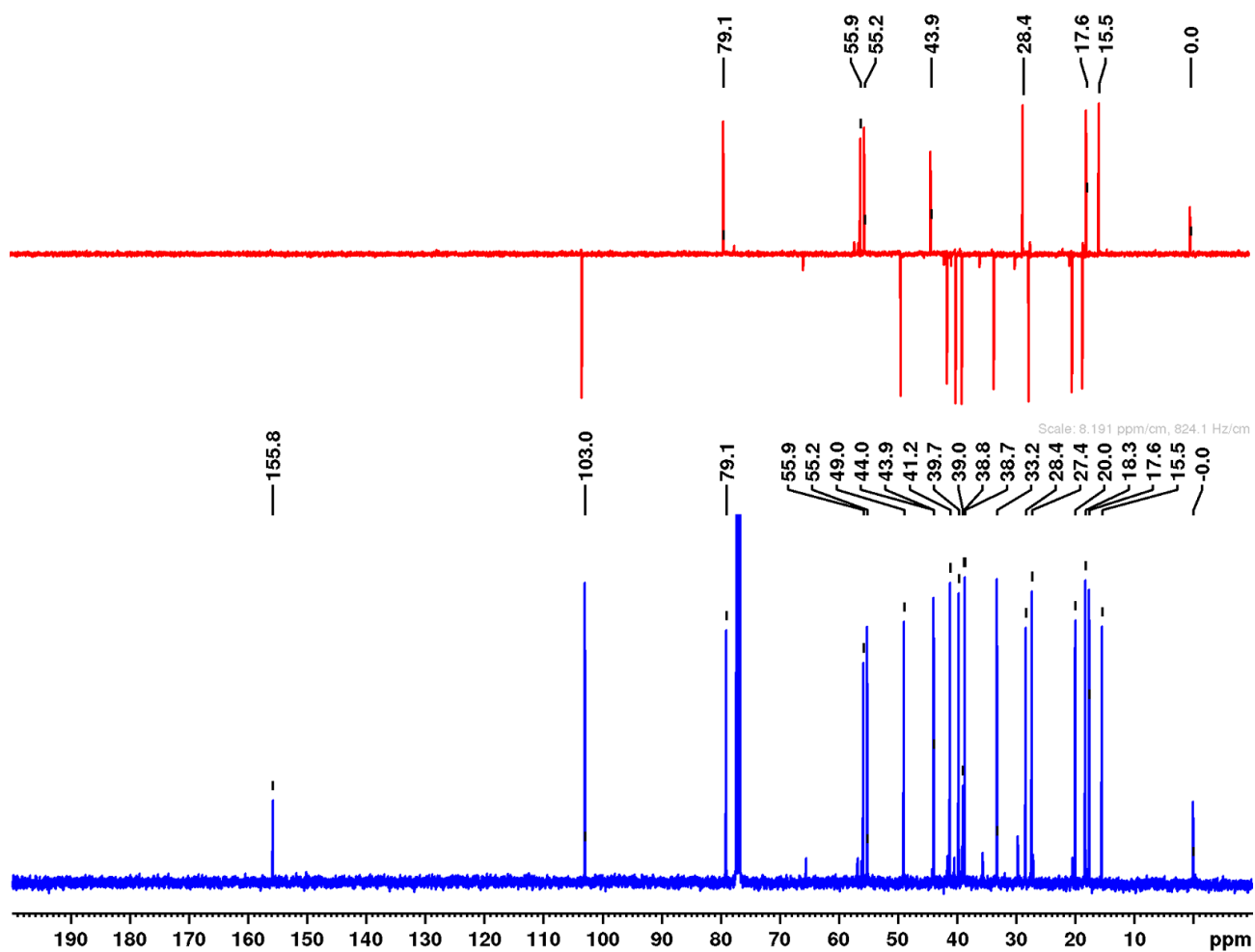


Figure 28S. ^{13}C NMR spectrum and DEPT of compound **4** (CDCl_3 , 100 MHz)

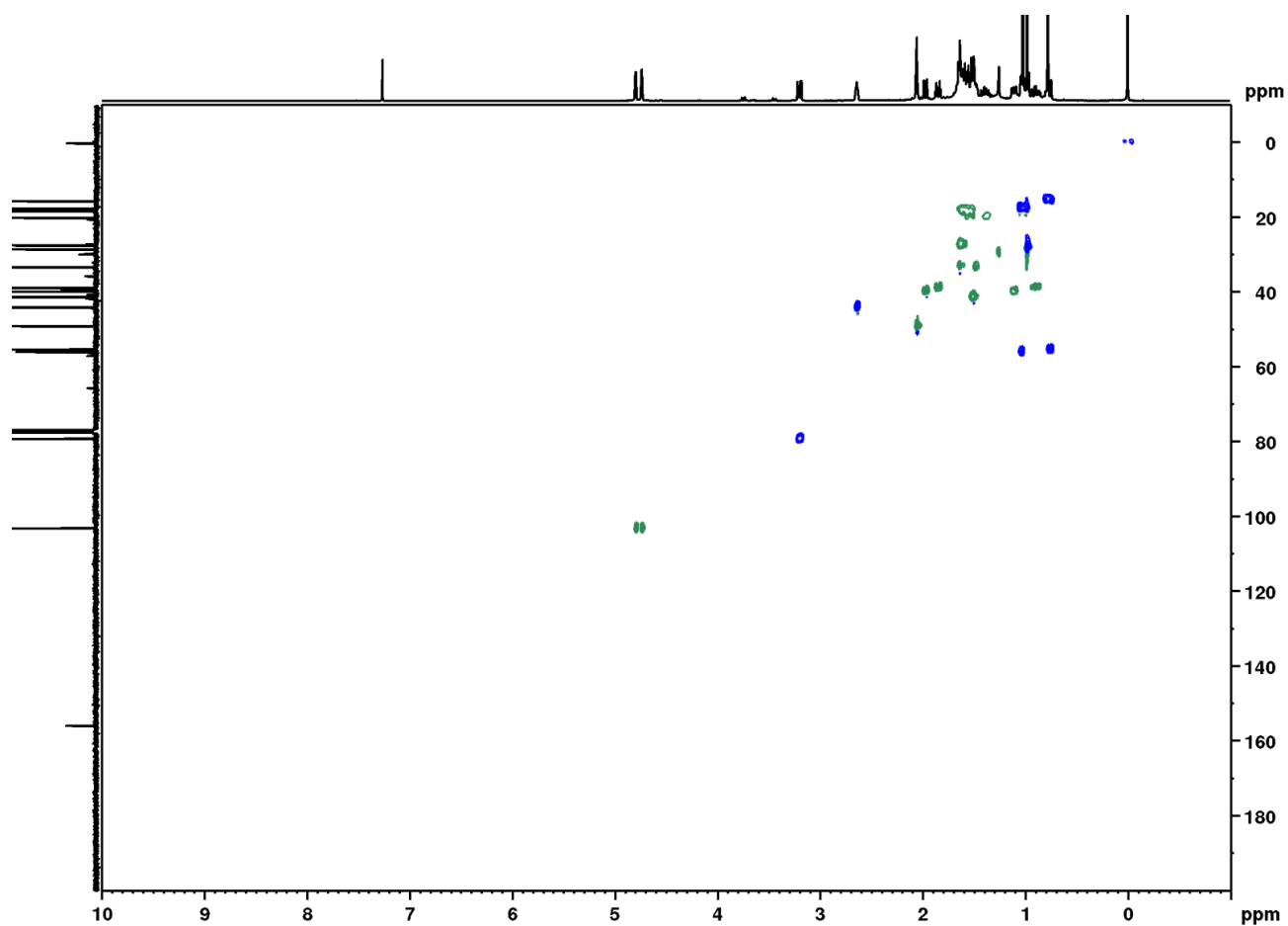


Figure 29S. One-bond ^1H - ^{13}C correlation map from HSQC NMR experiment of compound **4** (CDCl_3 , 400 (^1H) and 100 MHz (^{13}C), respectively)

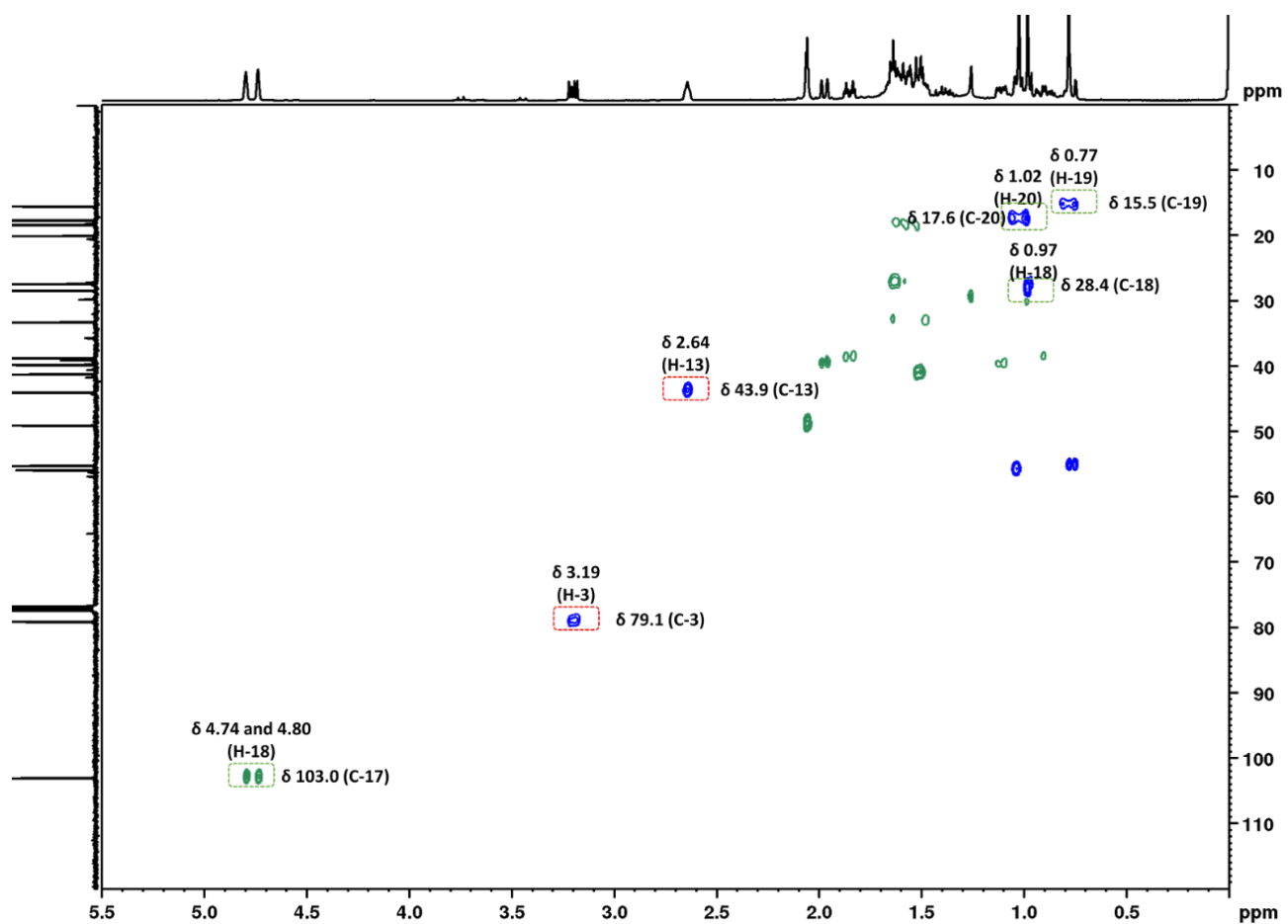


Figure 30S. Expansion (δ 5.50-0.00) of one-bond ^1H - ^{13}C correlation map from HSQC NMR experiment of compound 4 (CDCl_3 , 400 (^1H) and 100 MHz (^{13}C), respectively)

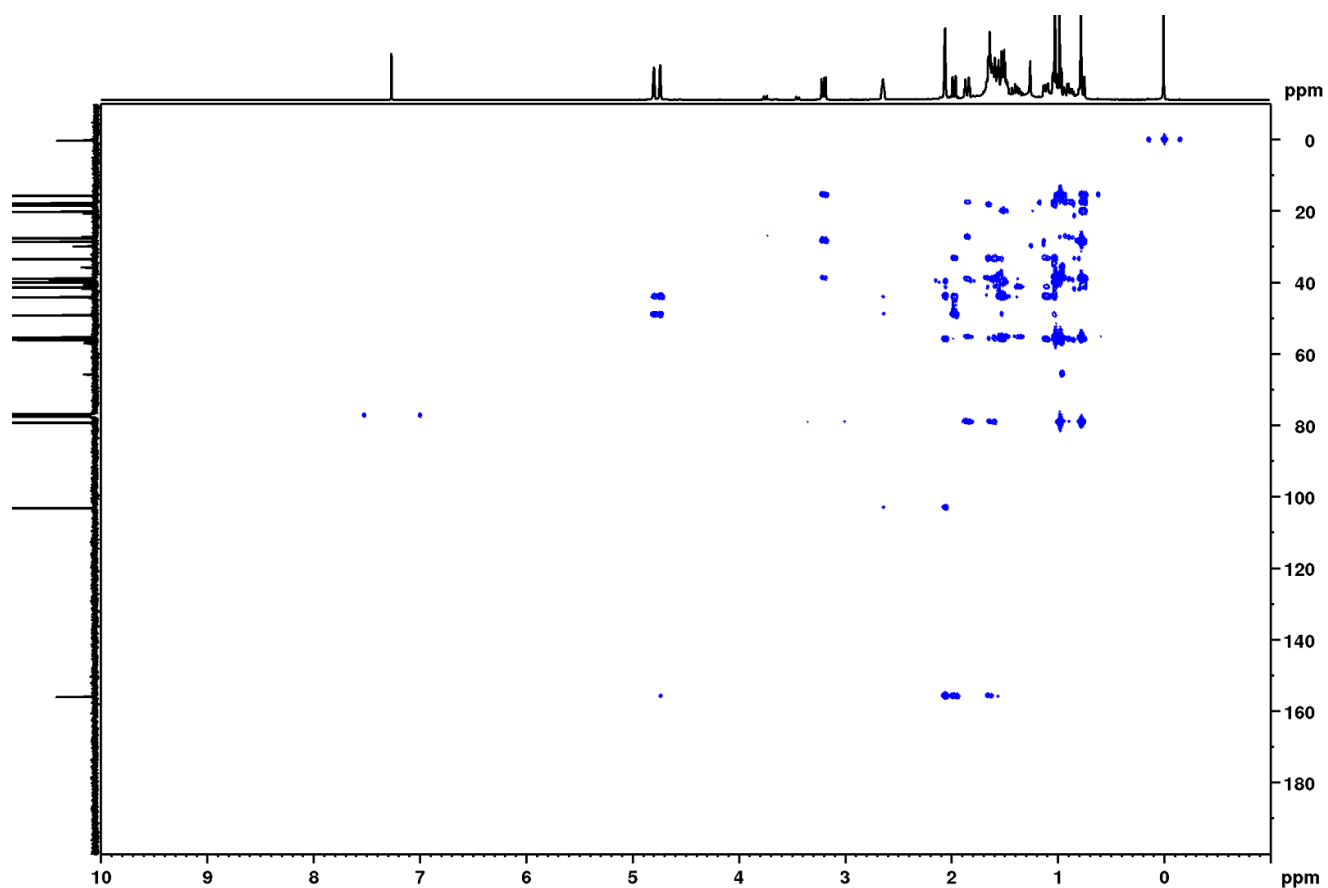


Figure 31S. Long-range ^1H - ^{13}C correlation map from HMBC NMR experiment of compound **4** (CDCl_3 , 400 (^1H) and 100 MHz (^{13}C), respectively)

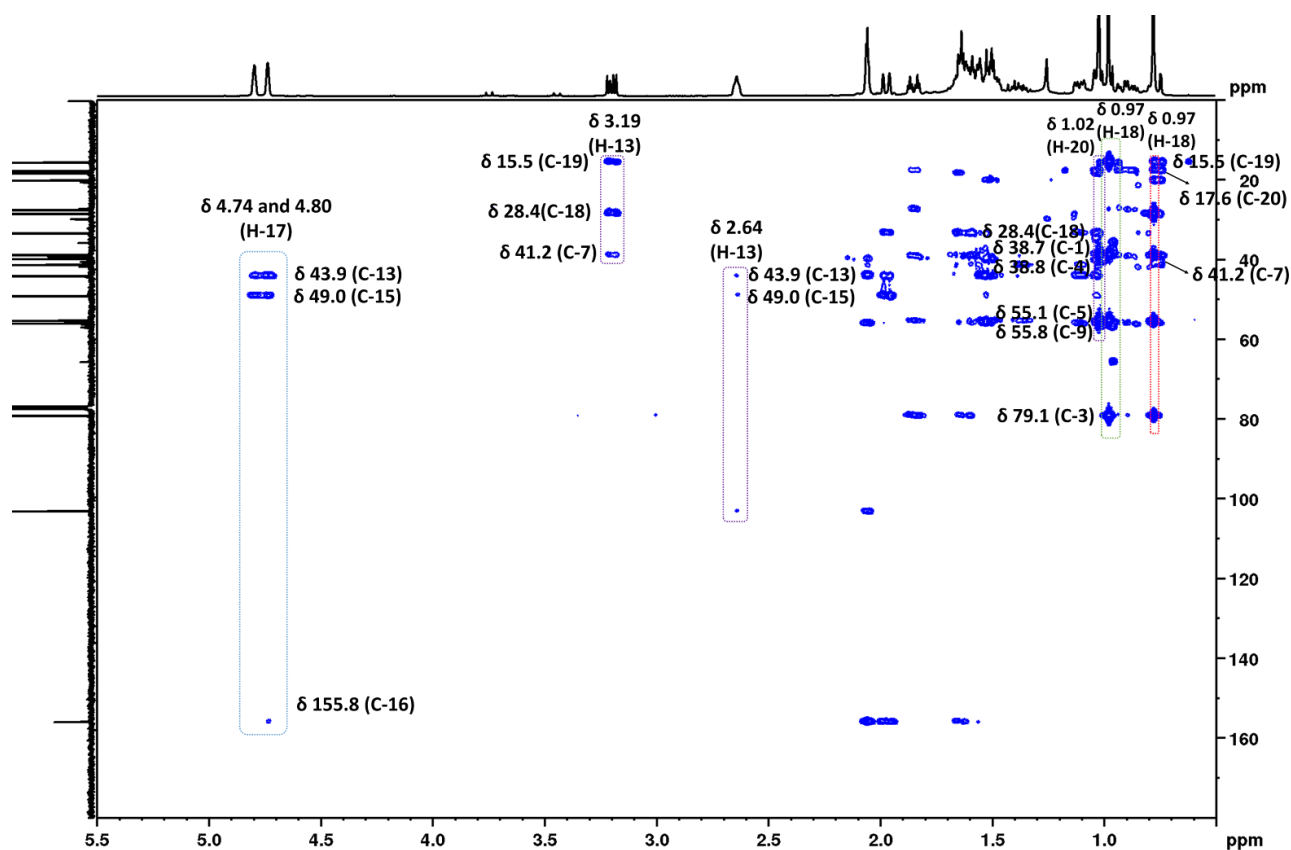


Figure 32S. Expansion (δ 5.50-0.00) of the long-range ^1H - ^{13}C correlation map from HMBC NMR experiment of compound **4** (CDCl_3 , 400 (^1H) and 100 MHz (^{13}C), respectively)

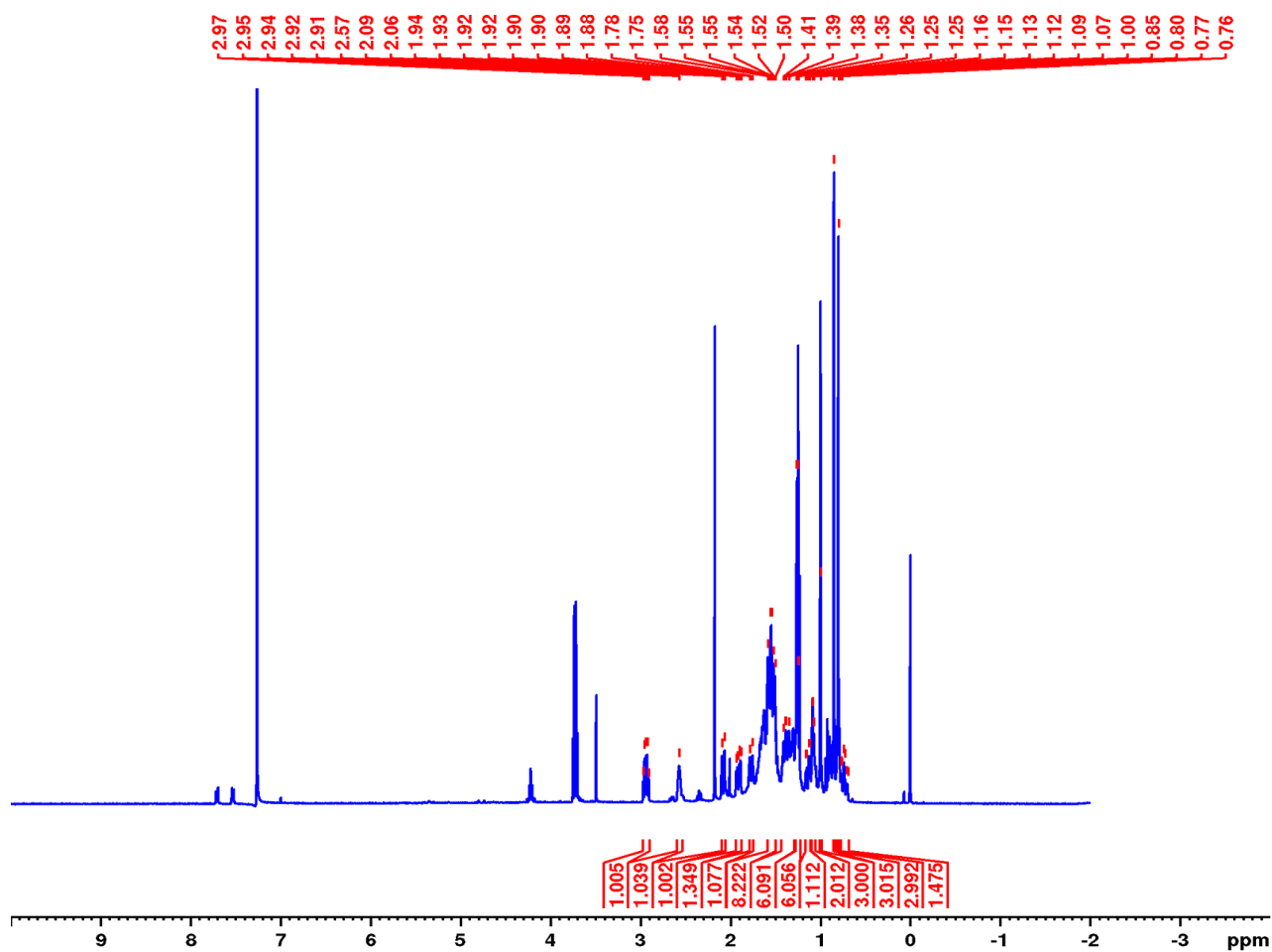


Figure 33S. ¹H NMR spectrum of compound 5 (CDCl₃, 400 MHz)

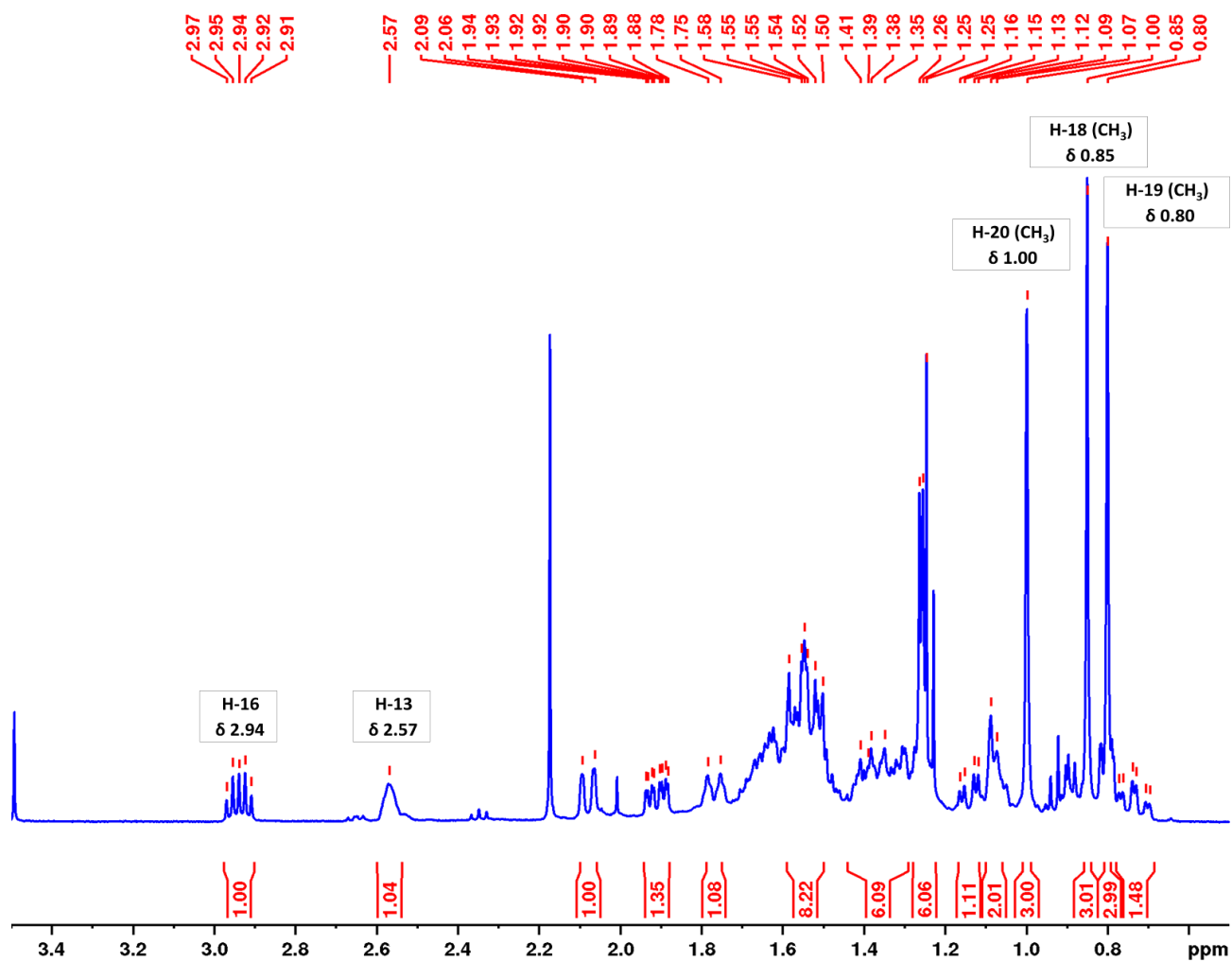


Figure 34S. Expansion (δ 5.00-0.70) of ^1H NMR spectrum of compound **5** (CDCl_3 , 400 MHz)

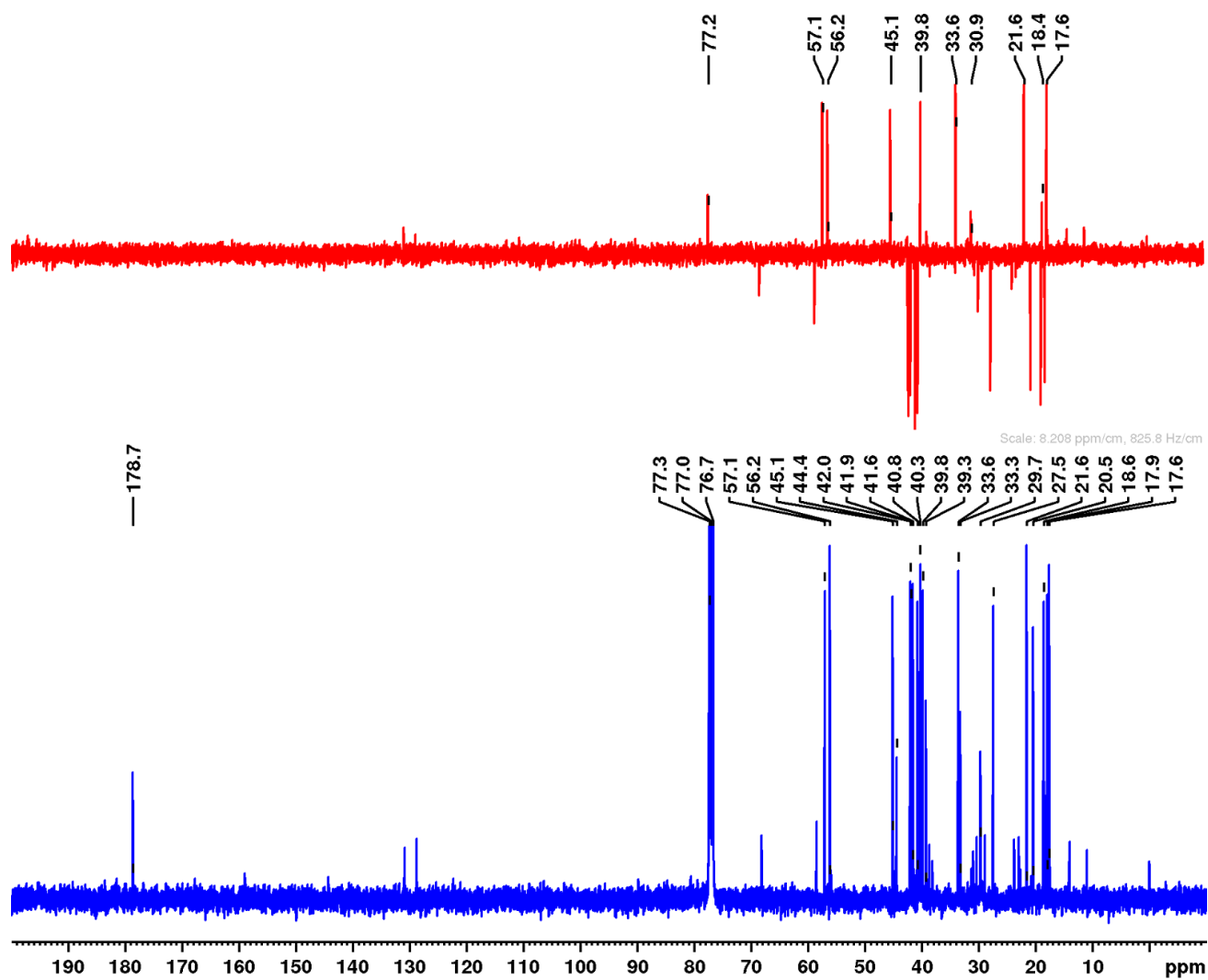


Figure 35S. ^{13}C NMR spectrum and DEPT of compound **5** (CDCl_3 , 100 MHz)

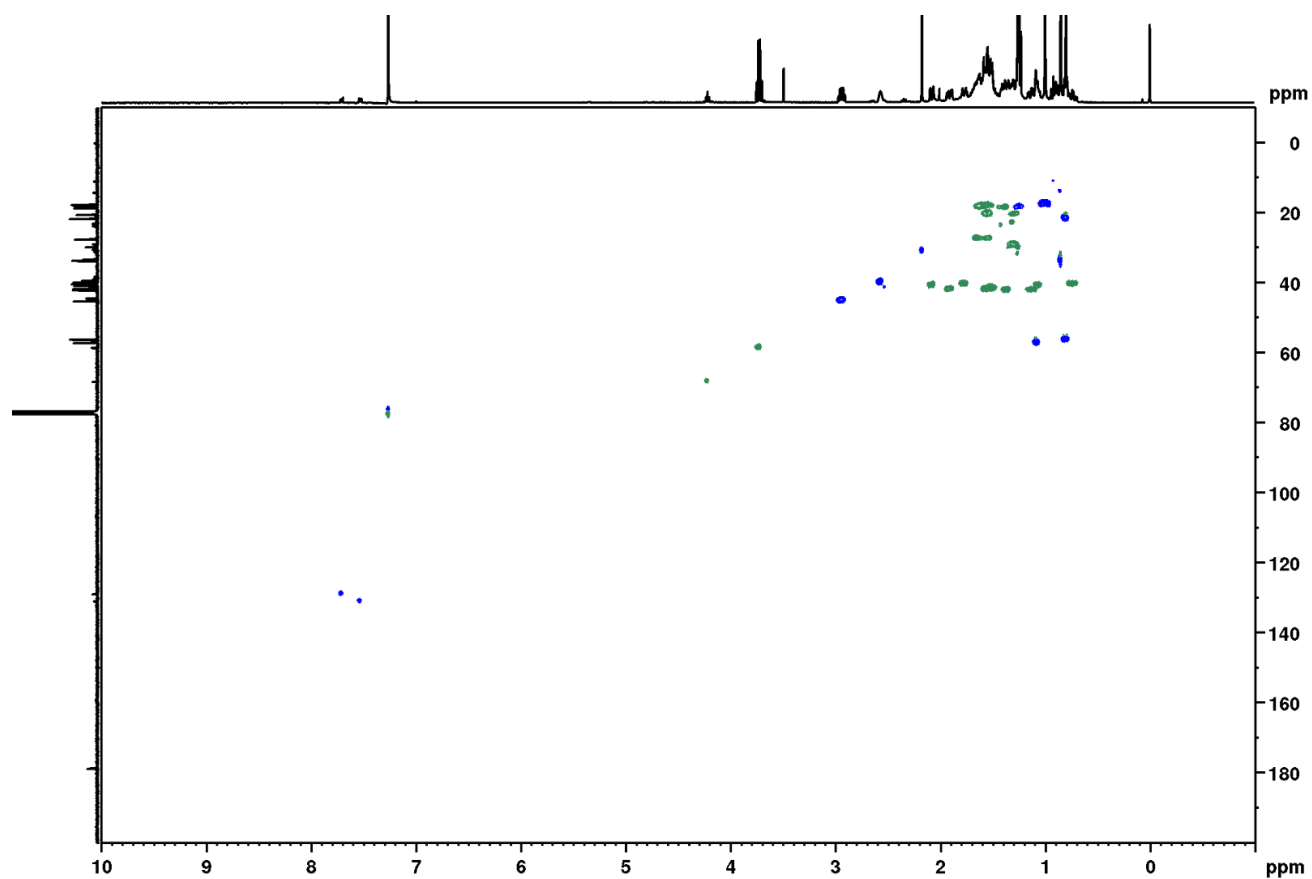


Figure 36S. One-bond ^1H - ^{13}C correlation map from HSQC NMR experiment of compound **5** (CDCl_3 , 400 (^1H) and 100 MHz (^{13}C), respectively)

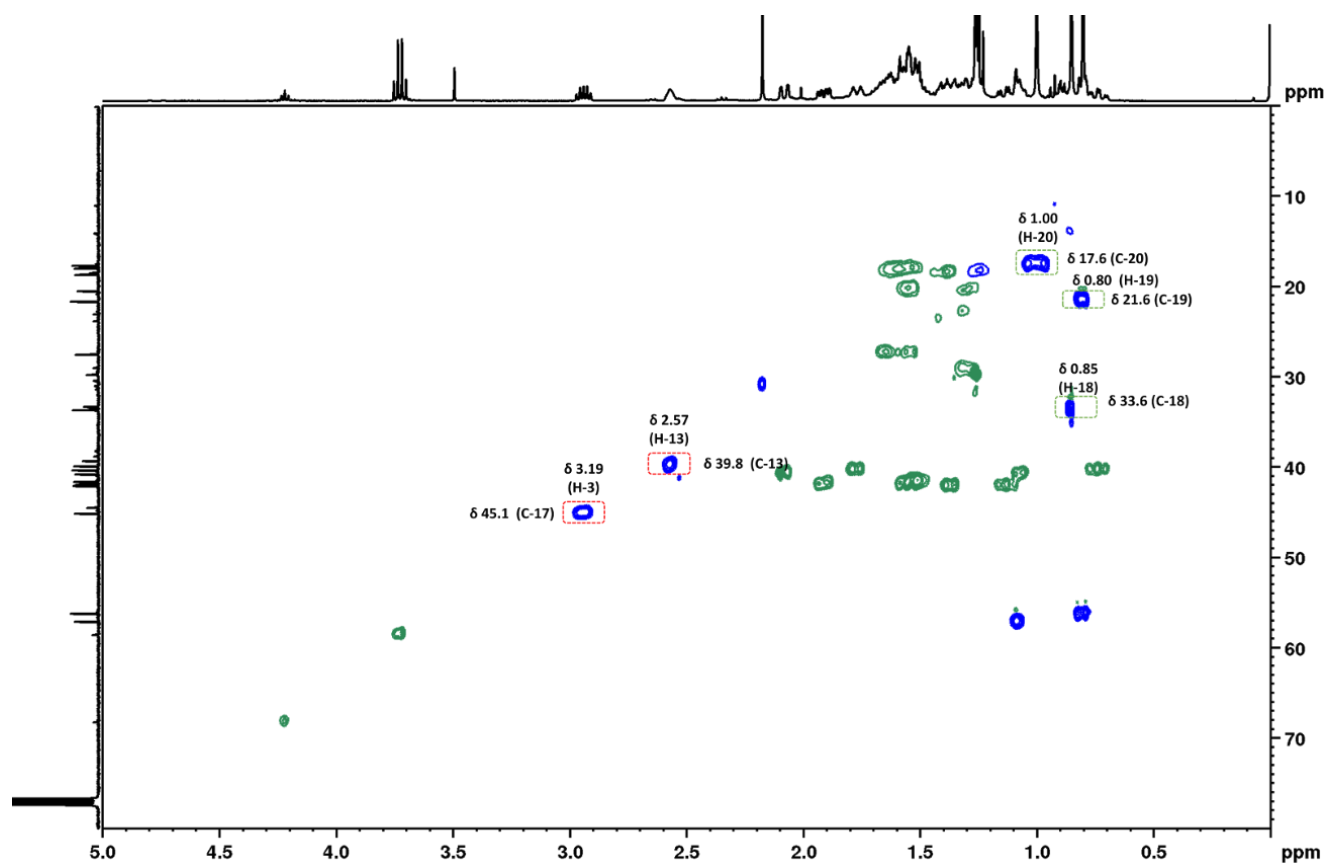


Figure 37S. Expansion (δ 5.00-0.00) of one-bond ^1H - ^{13}C correlation map from HSQC NMR experiment of compound **5** (CDCl_3 , 400 (^1H) and 100 MHz (^{13}C), respectively)

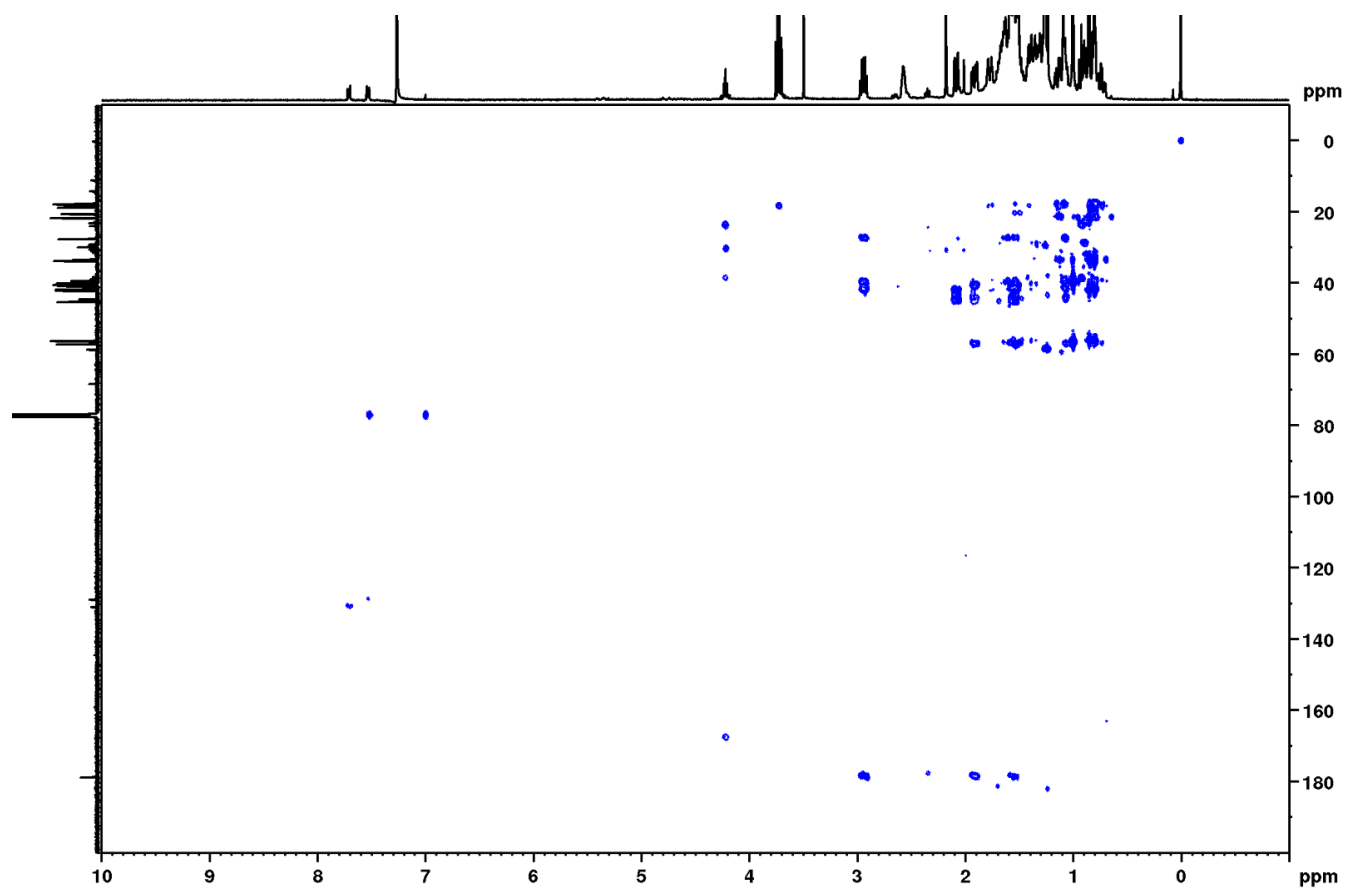


Figure 38S. Long-range ^1H - ^{13}C correlation map from HMBC NMR experiment of compound **5** (CDCl_3 , 400 (^1H) and 100 MHz (^{13}C), respectively)

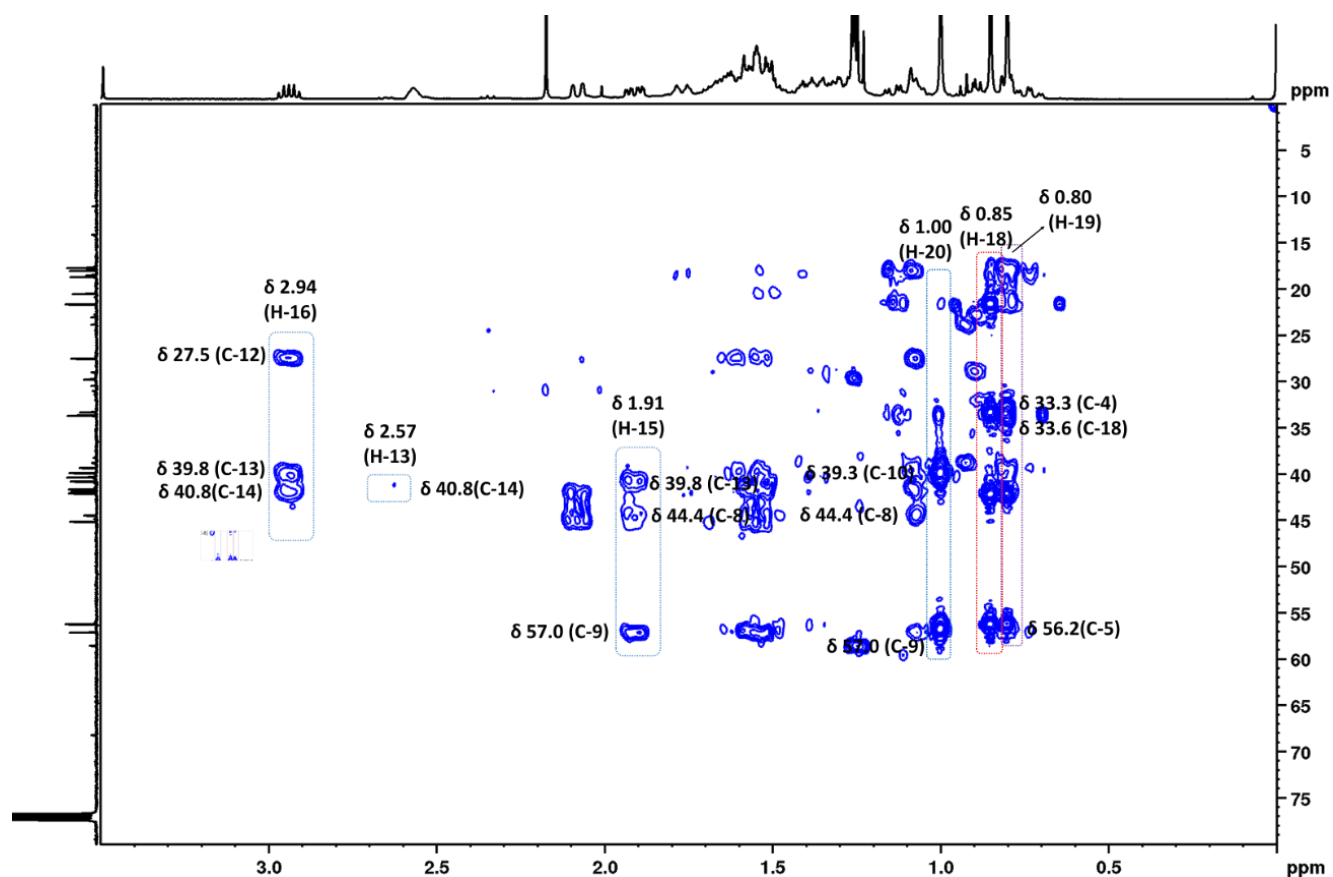


Figure 39S. Expansion (δ 3.50-0.00) of the long-range ^1H - ^{13}C correlation map from HMBC NMR experiment of compound **5** (CDCl_3 , 400 (^1H) and 100 MHz (^{13}C), respectively)

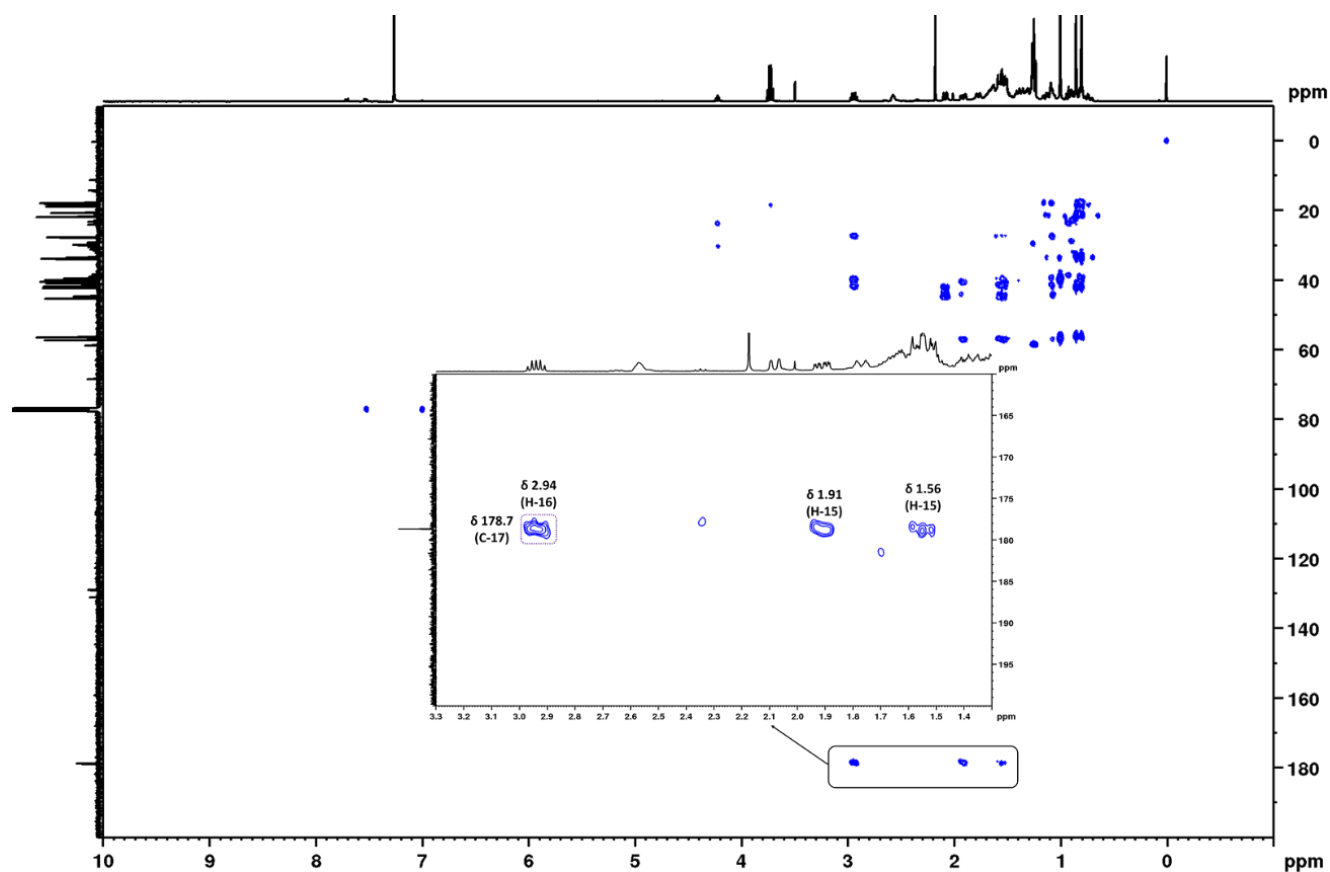


Figure 40S. Expansion region of observed C-17 correlations in long-range ^1H - ^{13}C correlation map from HMBC NMR experiment of compound **5** (CDCl_3 , 400 (^1H) and 100 MHz (^{13}C), respectively)