

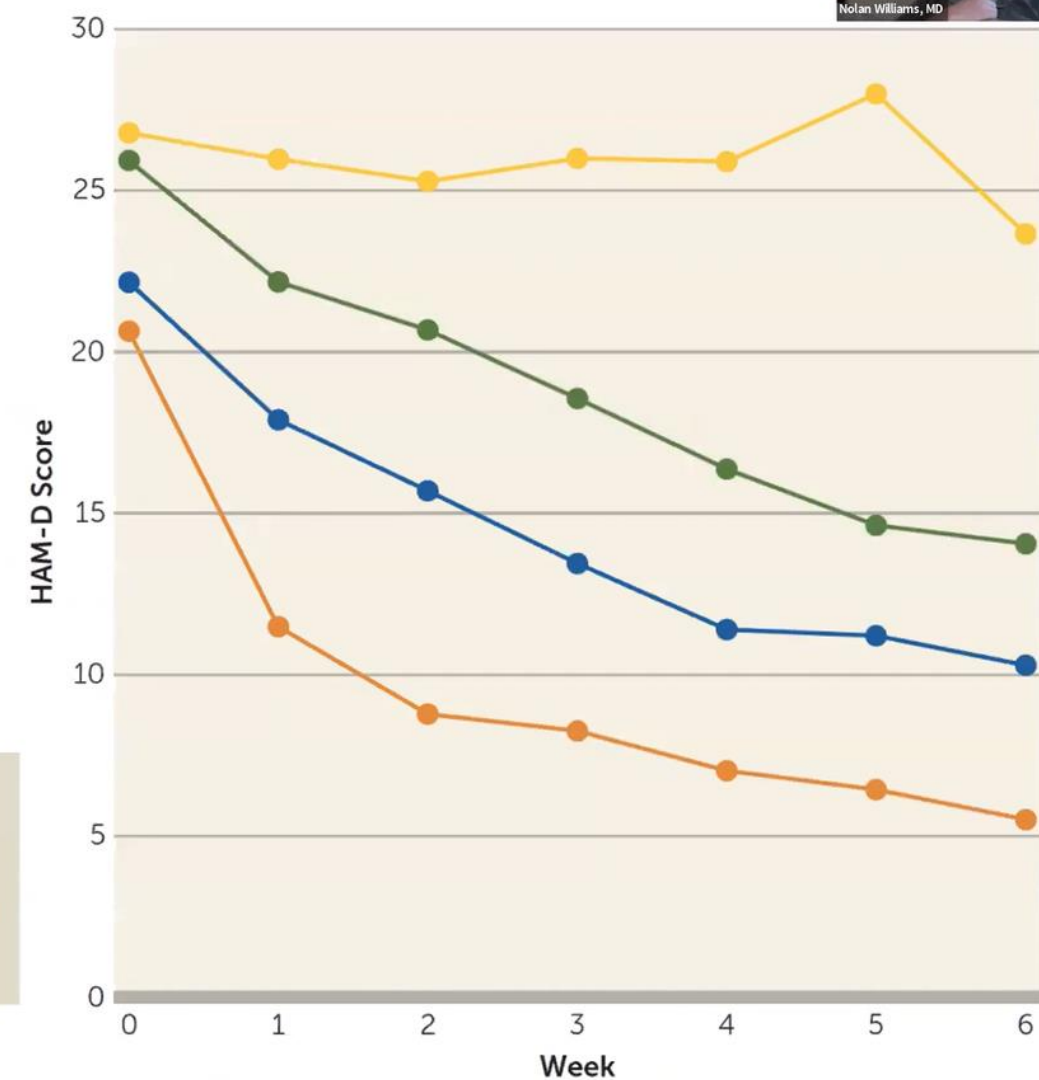
Trajectories of Response to Dorsolateral Prefrontal rTMS in Major Depression: A THREE-D Study

Tyler S Kaster¹, Jonathan Downar¹, Fidel Vila-Rodriguez¹, Kevin E Thorpe¹, Kfir Feffer¹, Yoshihiro Noda¹, Peter Giacobbe¹, Yuliya Knyahnytska¹, Sidney H Kennedy¹, Raymond W Lam¹, Zafiris J Daskalakis¹, Daniel M Blumberger¹

Em estudo com 388 pacientes, a projeção de tendência além de 6 semanas estima resposta perto de 90%

Trajectories

- Rapid response (N=73)
- Lower baseline symptoms, linear response (N=154)
- Higher baseline symptoms, linear response (N=118)
- Nonresponse (N=43)



Kaster 2019



Nolan Williams, MD

61% of unmedicated treatment resistant depression patients who did not respond to acute TMS treatment responded after four weeks of twice weekly deep TMS in the Brainsway pivotal trial

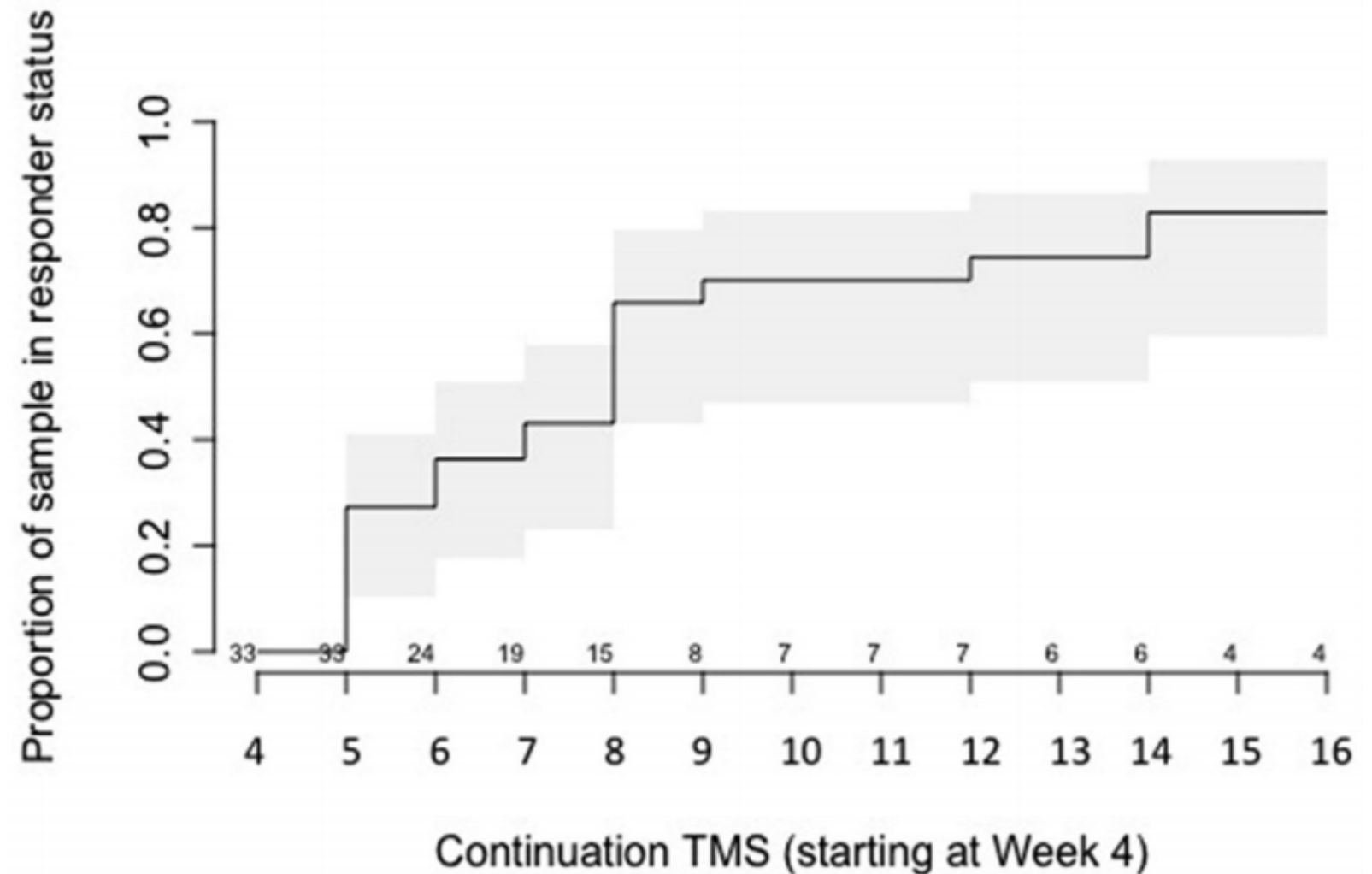
Agustin G Yip¹, Mark S George², Aron Tendler³, Yiftach Roth³, Abraham Zangen⁴, Linda L Carpenter⁵

Estudo com 33 pacientes não responsivos entre 89 que estavam no grupo ativo de estudo placebo-controlado. Entre os 89, 38% haviam respondido

EMT menos intensiva (2x/semana) além da semana 4 trouxe:

Resposta em 61% até semana 8 e em 73% até semana 16

Remissão de até 64% ao final do estudo

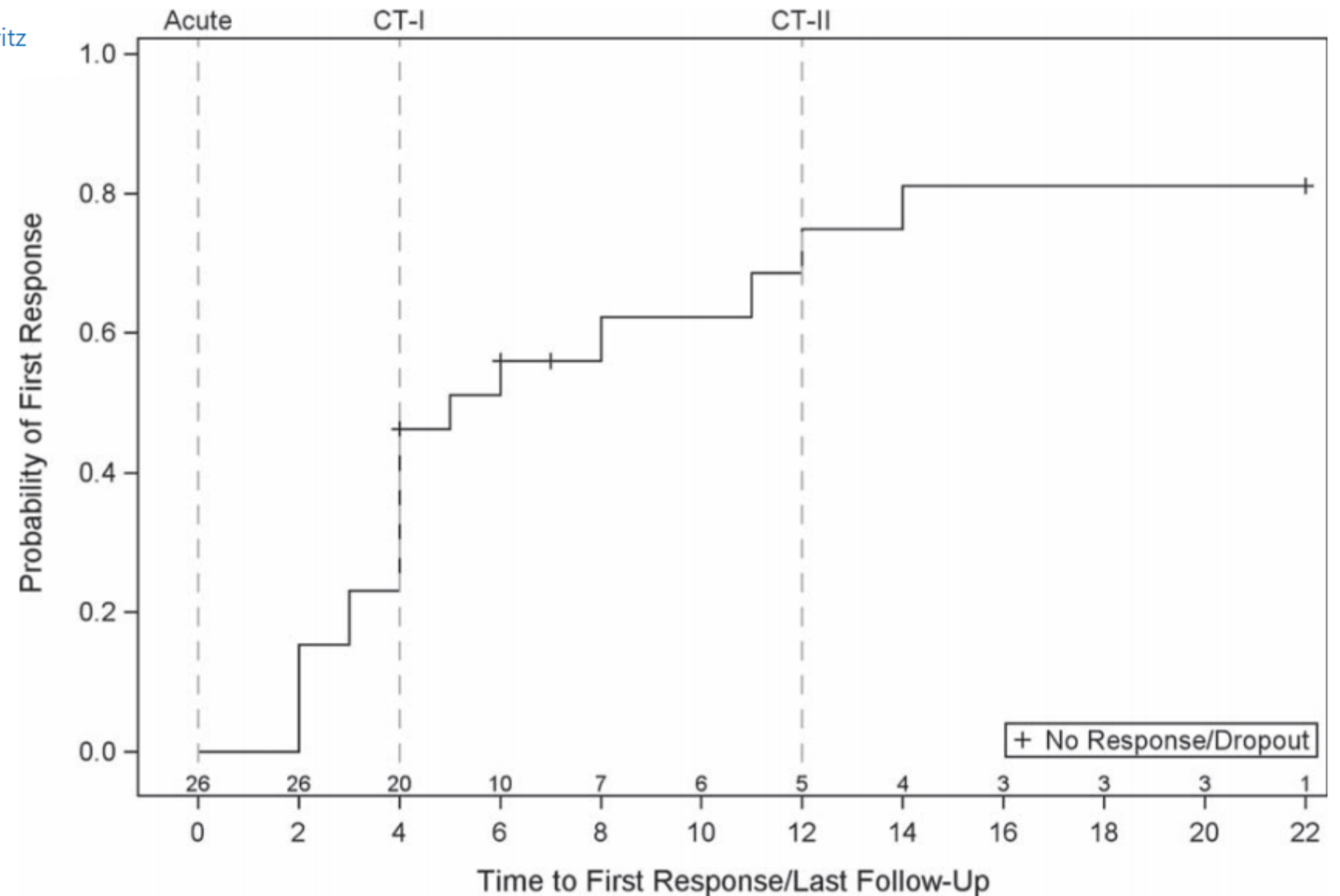


H-coil repetitive transcranial magnetic stimulation for treatment resistant major depressive disorder: An 18-week continuation safety and feasibility study

Eiran Vadim Harel¹, Liron Rabany, Lisa Deutsch, Yuval Bloch, Abraham Zangen, Yechiel Levkovitz

A taxa de resposta quando se olha em prazo de 12 a 18 semanas chega a 80%

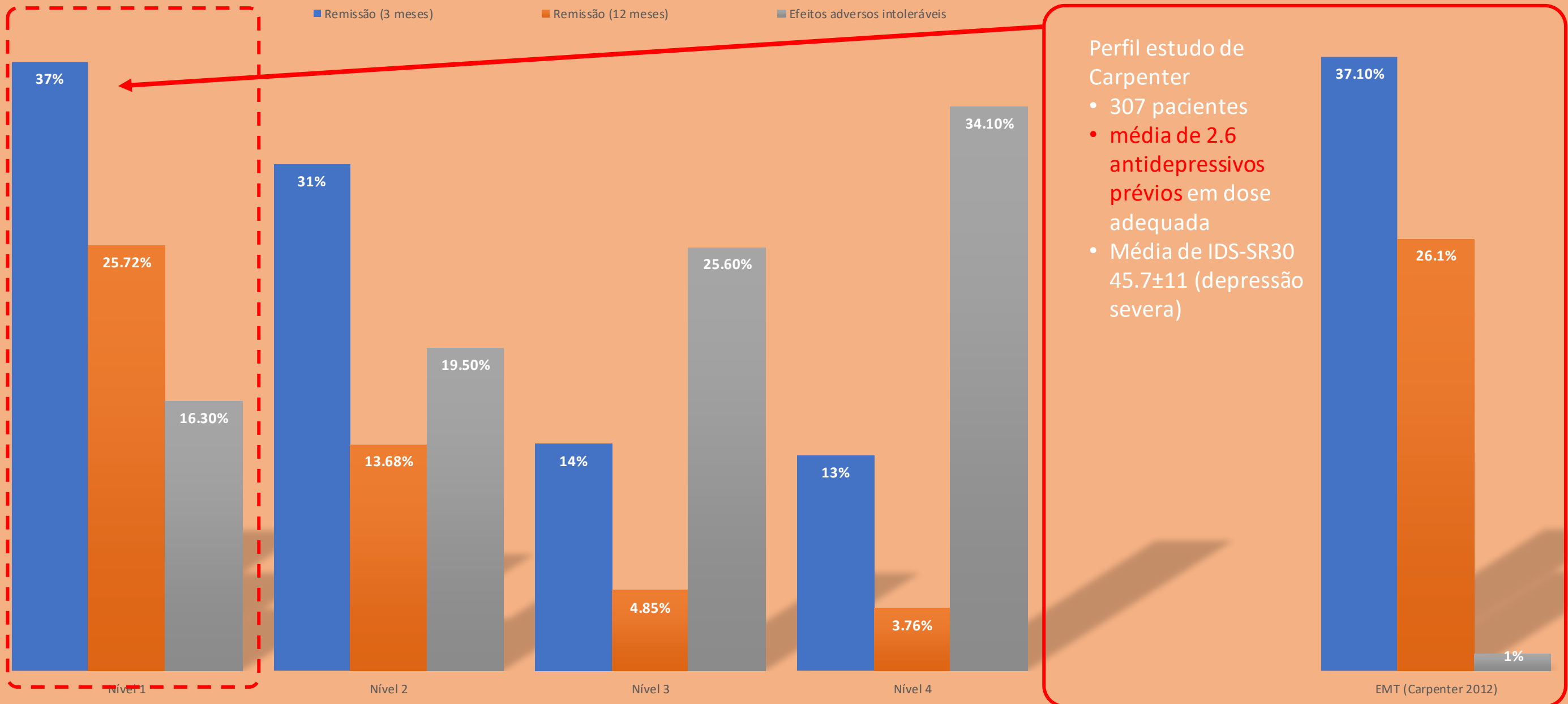
Estudo aberto com 26 pacientes



-Numbers above X-axis indicate number of subjects without response at each time point
-Time to response is measured in weeks

Figure 1. Kaplan-Meier curve of the probability of response.

Remissão, Remissão sustentada e Efeitos Adversos no STAR-D comparados a EMT (Protocolo FDA)



Perfil estudo de Carpenter

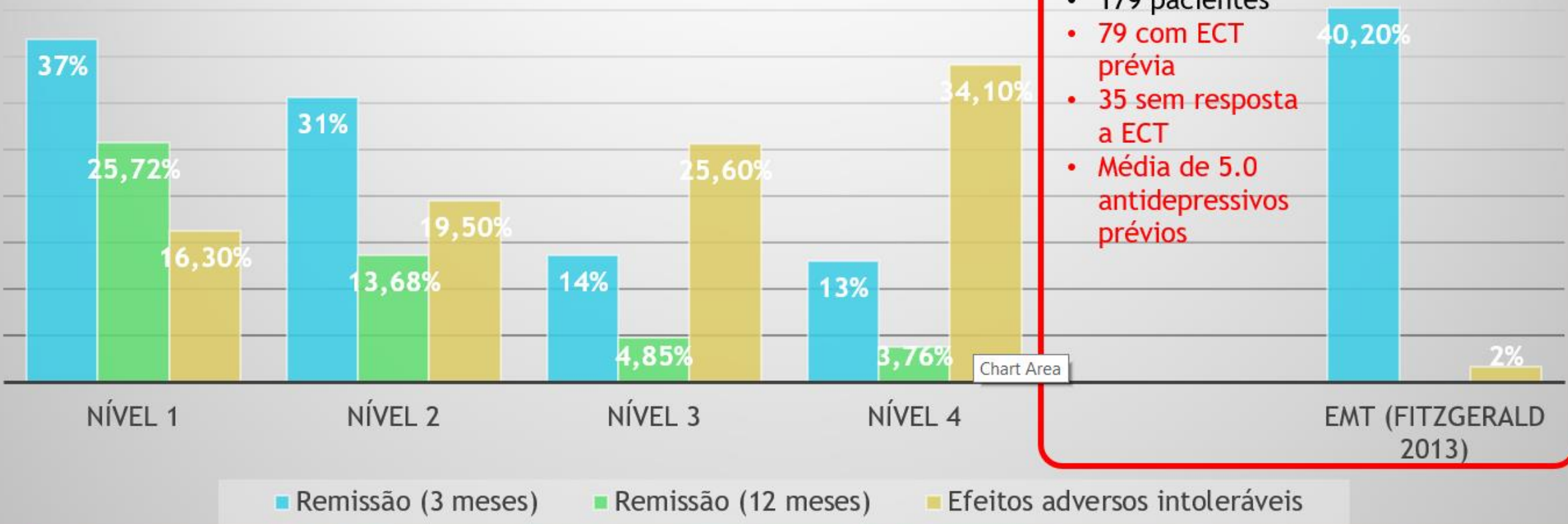
- 307 pacientes
- **média de 2.6 antidepressivos prévios** em dose adequada
- Média de IDS-SR30 45.7±11 (depressão severa)

Carpenter LL, Demitrack MA. Transcranial magnetic stimulation (TMS) for major depression: a multisite, naturalistic, observational study of acute treatment outcomes in clinical practice. *Depress Anxiety*. 2012 Jul (pacientes podiam continuar tomando o antidepressivo ineficaz)

Dunner DL, Aaronson ST, Sackeim HA, Janicak PG, Carpenter LL, Boyadjis T, Brock DG, Bonneh-Barkay D, Cook IA, Lanocha K, Solvason HB, Demitrack MA. A multisite, naturalistic, observational study of transcranial magnetic stimulation for patients with pharmacoresistant major depressive disorder: durability of benefit over a 1-year follow-up period. *J Clin Psychiatry*. 2014 Dec

Números

Remissão, Remissão sustentada e Efeitos Adversos no STAR-D comparados a EMT (Protocolo Priming ou Bilateral)



O tratamento com EMT trouxe pacientes refratários a níveis de resposta sustentada semelhantes a de pacientes virgens de tratamento com nível de efeitos adversos bastante inferior até ao de SSRIs.

Fitzgerald PB, Hoy KE, Singh A, Gunewardene R, Slack C, Ibrahim S, Hall PJ, Daskalakis ZJ. Equivalent beneficial effects of unilateral and bilateral prefrontal cortex transcranial magnetic stimulation in a large randomized trial in treatment-resistant major depression. Int J Neuropsychopharmacol. 2013 Oct;16(9)